

**MONDIALTECH**  
Forniture Industriali

Via Raimondo Dalla Costa 2403  
41100 MODENA - ITALY  
Tel. +39 059 250090 Fax: +39 059 260083  
Codice R.E.A. 354046  
Partita IVA E Codice Fiscale: 03061810366  
e-Mail: [monditecinfo@mondialtech.net](mailto:monditecinfo@mondialtech.net)  
Web: <http://www.mondialtech.net>

**LK**  
Supporto di Qualità

**CSC**  
Certiﬁcato Nazionale

**MONDIAL**  
Caterpillar & Ball

Vasto assortimento di Cuscinetti SKF - FAG

# ***LSB***



**Snodi Sferici – Teste a Snodo –  
Articolazioni Sferiche**

**Spherical Plain Bearings – Rod Ends –  
Ball Joint Rod Ends**



**MONDIALTECH srl** è un'azienda specializzata nelle soluzioni tecniche per l'industria, con personale specializzato e la più ampia varietà di prodotti finalizzati alle diverse applicazioni garantendone la qualità adeguata alla giusta applicazione.

Dalla esperienza del proprio personale operante da diversi anni nel settore siamo in grado di soddisfare le più svariate necessità della clientela proponendo prodotti che per rapporto qualità/prezzo sono unici sul mercato.

**MONDIALTECH srl** is a company specialized in the technical solution for the industry, with specialistic staff and the widest variety than produced finalizes you to the various application guaranteeing some the quality adapted to the just application. From the just personal experience of operating one from various years in the field we are in a position to satisfying the most varied produced necessities of the customers proposing that for relationship quality/price is only on the market.





**MONDIALTECH**  
Forniture Industriali

Via Raimondo Dalla Costa 240/b  
41100 MODENA - ITALY  
Tel. +39 059 250090 Fax. +39 059 260083  
Codice R.E.A. 354046  
Partita IVA E. Codice Fiscale: 03061810366  
e-Mail: [multicinfo@mondialtech.net](mailto:multicinfo@mondialtech.net)  
Web: <http://www.mondialtech.net>

Vasto assortimento di Cuscinetti SKF - FAG

**LK**  
Supporto di Qualità

**CSC**  
Cuscinetti Standard

**MONDIAL**  
Cuscinetti a Balli

Grazie a magazzini costantemente riforniti ogni tipologia di prodotto è sempre disponibile in elevata quantità.

Thanks to warehouses constantly resupplied every types of product always available in are elevated amount.





**MONDIALTECH**  
Forniture Industriali

Via Raimondo Dalla Costa 240/b  
41100 MODENA - ITALY  
Tel. +39 059 256090 Fax. +39 059 260883  
Codice R.E.A. 354046  
Partita IVA E. Codice Fiscale: 03061810366  
e-Mail: [monditecinfo@mondialtech.net](mailto:monditecinfo@mondialtech.net)  
Web: <http://www.mondialtech.net>

Vasto assortimento di Cuscinetti SKF - FAG

**LK**  
Pignoni di Qualità

**CSC**  
Cuscinetti Normalizzati

**MONDIAL**  
Cuscinetti a Balli

La qualità è garantita grazie ad accordi con Aziende produttrici certificate ed ai continui e costanti controlli effettuati da nostri tecnici sempre presenti presso i produttori.

The quality is guaranteed thanks to agreements with Companies certifyd manufacturers and to the continous and constant controls it carries out to you from our always present technicians near the producers.





## INDICE – INDEX

### - Snodi Sferici Radiali – Radial Spherical plain Bearings

GE...ES – GE... ES 2RS  
 GEG...ES – GEG...ES 2RS  
 GE...LO  
 GE...HO  
 GEZ...ES – GEZ...ES 2RS  
 GE...UK  
 GE...UK 2RS  
 GE...FW  
 GE...FW 2RS  
 SGE...UK  
 SGE...FW  
 GEBK...S  
 G...PB  
 S...PB  
 GEBJ...S  
 G...PW  
 S...PW

### - Teste a Snodo - Rod Ends

SI...ES – SI...ES 2RS  
 SA...ES – SA...ES 2RS  
 SI...T/K  
 SA...T/K  
 SSI...T/K  
 SSA...T/K  
 SI...BK  
 SA...BK  
 SI...PK  
 SA...PK  
 GIR...UK – GIR...UK 2RS  
 GAR...UK – GAR...UK 2RS  
 RF...  
 RM...



## - Teste a Snodo per Idraulica - Hydraulic Rod Ends

GIHR...DO  
GIHR-K...DO  
GIHN-K...LO  
GIHO-K...DO  
GK...DO  
GF...DO  
GF...LO

## - Articolazione Angolare - Ball joints

SQD  
SQZ..RS  
SQ..RS  
SQP..S

## - Informazioni Tecniche – Technical Information

Tolleranze - Tolerances  
Assemblaggio e Lubrificazione - Assembly and Lubrification



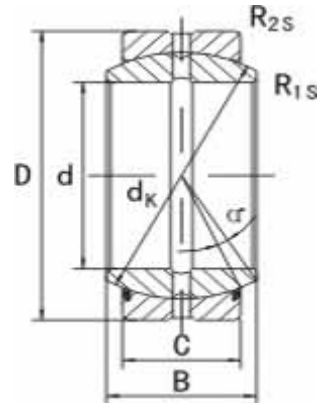
## Snodi Sferici - Spherical Plain Bearings

### Tabella di Comparazione - Interchange table

MONDIALT.	SWEDEN	GERMANY	GERMANY	GERMANY	CHINA	JAPAN	JAPAN	JAPAN
LSB	SKF	FAG	ELGES	ASK	LS	IKO	NTN	NMB
GE..E	GE..E	GE..E	GE..DO	GE..	GE..E	GE..E	SA <sub>1</sub> ...B	SBH..NS
GE..ES	GE..ES	GE..ES	GE..DO	GE..	GE..ES	GE..ES	SA <sub>1</sub> ...B	SBH..S
GE..ES 2RS	GE..ES 2RS	GE..ES 2RS	GE..DO 2RS	GE..2RS	GE..ES 2FRS	GE..ES 2RS	SA <sub>1</sub> ...BSS	
GEG..E	GEH..E	GEH..E	GE..FO		GEG..E	GE..G		
GEG..ES	GEH..ES	GEH..ES	GE..FO		GEG..ES	GE..GS		
GEG..ES 2RS	GEH..ES 2RS	GEH..ES 2RS	GE..FO 2RS		GEG..ES 2RS	GE..GS 2RS		
GE..LO	GEG..ES		GE..LO		GEEW..ES			
GE..HO 2RS	GEM..ES 2RS		GE..HO 2RS		GEEM..ES 2RS			
GE..UK	GE..C	GE..C	GE..UK	GE..-D	GE..C	GE..EC	SAR <sub>1</sub> ..	
GE..UK 2RS	GE..TE 2RS	GE..UA 2RS	GE..D 2RS	GE..D 2RS	GE..ET 2RS			
GE..FW	GEH..C	GEH..C	GE..FW		GEG..C			
GE..FW 2RS	GEH..TE 2RS		GE..FW 2RS		GEG..ET 2RS			
GEBK..S					GEBK..S	PB..		
GEBJ..S			GE..PB		GEBJ..S			
SGE..UK	GE..TGR							
SGE..FW	GEH..TGR							
G..PB			GE..PB	G				
G..PW			GE..PW	G..D				
S..PB				S..				
S..PW				S..D				



## Snodi Sferici Radiali Radial spherical plain bearings GE..E(S),GE..ES 2RS



Anello esterno senza scanalatura circonferenziale - Outer ring with sigle split in axial direction.

Scanalature e fori di lubrificazione su anello interno e esterno per il tipo ES-Lubricating grooves and holes in the outer and inner rings of type ES.

Anello esterno a due tenute stagne nel tipo 2RS-Outer ring of type-2RS with lip seals in both sides.

Fosfatizzati su entrambi gli anelli-Both outer and inner rings are properly phosphate treated.

Part. No.	Dimensioni - Dimensions mm								Load ratings kN		Peso - Weight kg
	d	D	B	C	d <sub>k</sub>	R <sub>1s</sub> min	R <sub>2s</sub> min	a ≈	dyn C	stat C <sub>0</sub>	
GE6E	6	14	6	4	10	0.3	0.3	13	3.4	17	0.004
GE8E	8	16	8	5	13	0.3	0.3	15	5.5	27.5	0.007
GE10E	10	19	9	6	16	0.3	0.3	12	8.15	40.5	0.011
GE12E	12	22	10	7	18	0.3	0.3	11	10.8	54	0.016
GE15ES - GE15ES2RS	15	26	12	9	22	0.3	0.3	8	17	85	0.025
GE16ES - GE16ES2RS	16	30	14	10	25	0.3	0.3	10	21.2	106	0.041
GE17ES - GE17ES2RS	17	30	14	10	25	0.3	0.3	10	21.2	106	0.041
GE20ES - GE20ES2RS	20	35	16	12	29	0.6	0.3	9	30	146	0.061
GE25ES - GE25ES2RS	25	42	20	16	35.5	0.6	0.6	7	48	240	0.11
GE30ES - GE30ES2RS	30	47	22	18	40.7	0.6	0.6	6	62	310	0.14
GE35ES - GE35ES2RS	35	55	25	20	47	0.6	1.0	6	80	400	0.22
GE40ES - GE40ES2RS	40	62	28	22	53	0.6	1.0	7	100	500	0.30
GE45ES - GE45ES2RS	45	68	32	25	60	0.6	1.0	7	127	640	0.40
GE50ES - GE50ES2RS	50	75	35	28	66	0.6	1.0	6	156	780	0.54





**MONDIALTECH**  
Forniture Industriali

Via Raimondo Dalla Costa 240/b  
41100 MODENA - ITALY  
Tel. +39 059 256090 Fax: +39 059 260883  
Codice R.E.A. 354046  
Partita IVA E Codice Fiscale: 03061810366  
e-Mail: [monditecinfo@mondialtech.net](mailto:monditecinfo@mondialtech.net)  
Web: <http://www.mondialtech.net>

Vasto assortimento di Cuscinetti SKF - FAG

**LK**  
Pagamenti di Qualità

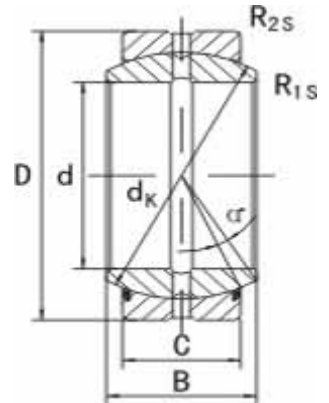
**CSC**  
Credenziali Commerciali

**MONDIAL**  
Cuscinetti a Balli

Part. No.	Dimensioni - Dimensions mm								Load ratings kN		Peso - Weight kg
	d	D	B	C	d <sub>k</sub>	R <sub>1s</sub>	R <sub>2s</sub>	a	dyn	stat	
						min	min	≈	C	C <sub>0</sub>	
<b>GE60ES - GE60ES2RS</b>	60	90	44	36	80	1.0	1.0	6	245	1220	1.00
<b>GE70ES - GE70ES2RS</b>	70	105	49	40	92	1.0	1.0	6	315	1560	1.50
<b>GE80ES - GE80ES2RS</b>	80	120	55	45	105	1.0	1.0	6	400	2000	2.20
<b>GE90ES - GE90ES2RS</b>	90	130	60	50	115	1.0	1.0	5	490	2450	2.70
<b>GE100ES - GE100ES2RS</b>	100	150	70	55	130	1.0	1.0	7	610	3050	4.30
<b>GE110ES - GE110ES2RS</b>	110	160	70	55	140	1.0	1.0	6	655	3250	4.70
<b>GE120ES - GE120ES2RS</b>	120	180	85	70	160	1.0	1.0	6	950	4750	8.00
<b>GE140ES - GE140ES2RS</b>	140	210	90	70	180	1.0	1.0	7	1080	5400	11.00
<b>GE160ES - GE160ES2RS</b>	160	230	105	80	200	1.0	1.0	8	1360	6800	14.00



## Snodi Sferici Radiali Radial spherical plain bearings GEG..E(S),GEG..ES 2RS



Anello esterno senza scanalatura circonferenziale - Outer ring with sigle split in axial direction.

Scanalature e fori di lubrificazione su anello interno e esterno per il tipo ES-Lubricating grooves and holes in the outer and inner rings of type ES.

Anello esterno a due tenute stagne nel tipo 2RS-Outer ring of type-2RS with lip seals in both sides.

Fosfatizzati su entrambi gli anelli-Both outer and inner rings are properly phosphate treated.

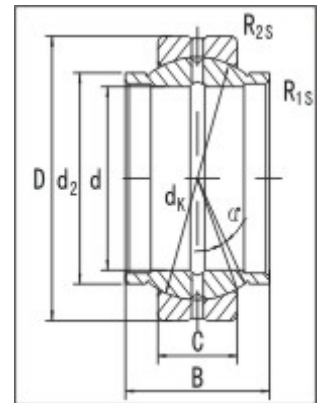
Part No	Dimensioni - Dimensions mm								Load ratings kN		Peso Weight kg
	d	D	B	C	d <sub>k</sub>	R <sub>1s</sub> min	R <sub>2s</sub> min	a ≈	dyn C	stat C <sub>0</sub>	
GEG6E	6	16	9	5	13	0.3	0.3	21	5.50	27.5	0.008
GEG8E	8	19	11	6	16	0.3	0.3	21	8.15	40.5	0.014
GEG10E	10	22	12	7	18	0.3	0.3	18	10.8	54.0	0.020
GEG12E	12	26	15	9	22	0.3	0.3	18	17.0	85.0	0.034
GEG15ES - GEG15ES2RS	15	30	16	10	25	0.3	0.3	16	21.2	106	0.046
GEG17ES - GEG17ES2RS	17	35	20	12	29	0.3	0.3	19	30.0	146	0.078
GEG20ES - GEG20ES2RS	20	42	25	16	35.5	0.6	0.6	17	48.0	240	0.150
GEG25ES - GEG20ES2RS	25	47	28	18	40.7	0.6	1.0	17	62.0	310	0.190
GEG35ES - GEG35ES2RS	35	62	35	22	53	0.6	1.0	16	100	500	0.390
GEG40ES - GEG40ES2RS	40	68	40	25	60	0.6	1.0	17	127	640	0.520
GEG45ES - GEG45ES2RS	45	75	43	28	66	0.6	1.0	15	156	780	0.680
GEG50ES - GEG50ES2RS	50	90	56	36	80	0.6	1.0	17	245	1220	1.40



Part No	Dimensioni - Dimensions mm									Load ratings kN		Peso Weight kg
	d	D	B	C	d <sub>k</sub>	R <sub>1s</sub> min	R <sub>2s</sub> min	a ≈	dyn C	stat C <sub>0</sub>		
<b>GEG60ES - GEG60ES2RS</b>	60	105	63	40	92	1.0	1.0	17	315	1560	2.00	
<b>GEG70ES - GEG70ES2RS</b>	70	120	70	45	105	1.0	1.0	16	400	2000	2.90	
<b>GEG80ES - GEG80ES2RS</b>	80	130	75	50	115	1.0	1.0	14	490	2450	3.50	
<b>GEG90ES - GEG90ES2RS</b>	90	150	85	55	130	1.0	1.0	15	610	3050	5.40	
<b>GEG100ES - GEG100ES2RS</b>	100	160	85	55	40	1.0	1.0	14	655	3250	5.90	
<b>GEG110ES - GEG110ES2RS</b>	110	180	100	70	160	1.0	1.0	11	950	4750	11.0	
<b>GEG120ES - GEG120ES2RS</b>	120	210	115	70	180	1.0	1.0	16	1080	5400	15.0	



## Snodi Sferici Radiali Radial spherical plain bearings GE..LO



- Anello esterno senza scanalatura circonferenziale - Outer ring with single split in axial direction.
- Anello interno con estensione cilindrica su entrambi i lati - Inner ring with cylindrical extensions at both sides

Scanalature e fori di lubrificazione su anello interno e esterno per il tipo ES - Lubricating grooves and holes in the outer and inner rings of type ES.

Anello esterno a due tenute stagne nel tipo 2RS - Outer ring of type-2RS with lip seals in both sides.

Fosfatizzati su entrambi gli anelli - Both outer and inner rings are properly phosphate treated.

Part No.	Dimensioni - Dimensions mm									Load ratings kN		Peso Weight kg
	d	d <sub>2</sub>	D	B	C	d <sub>k</sub>	R <sub>1s</sub> min	R <sub>2s</sub> min	a ≈	dyn C	stat C <sub>0</sub>	
GE12LO	12	15.5	22	12	7	18	0.3	0.3	4	10	53	0.022
GE16LO	16	20	28	16	9	23	0.3	0.3	4	17	85	0.035
GE20LO	20	25	35	20	12	29	0.3	0.3	4	30	146	0.070
GE25LO	25	30	42	25	16	35.5	0.6	0.6	4	48	240	0.120
GE30LO	30	34	47	30	18	40	0.6	0.6	4	62	310	0.168
GE32LO	32	38	52	32	18	44	0.6	1.0	4	67	335	0.200
GE35LO	35	40	55	35	20	48	0.6	1.0	4	79	399	0.253
GE40LO	40	46	62	40	22	53	0.6	1.0	4	100	500	0.340
GE50LO	50	57	75	50	28	66	0.6	1.0	4	156	780	0.560
GE60LO	60	68	90	60	36	80	1.0	1.0	4	245	1220	1.15
GE63LO	63	71.5	95	63	36	83	1.0	1.0	4	255	1270	1.20



**MONDIALTECH**  
Forniture Industriali

Via Raimondo Dalla Costa 240/b  
41100 MODENA - ITALY  
Tel. +39 059 256090 Fax: +39 059 260883  
Codice R.E.A. 354046  
Partita IVA E. Codice Fiscale: 03061810366  
e-Mail: [monditecinfo@mondialtech.net](mailto:monditecinfo@mondialtech.net)  
Web: <http://www.mondialtech.net>

Vasto assortimento di Cuscinetti SKF - FAG

**LK**  
Supporto di Qualità

**CSC**  
Cuscinetti Standard

**MONDIAL**  
Cuscinetti a Balli

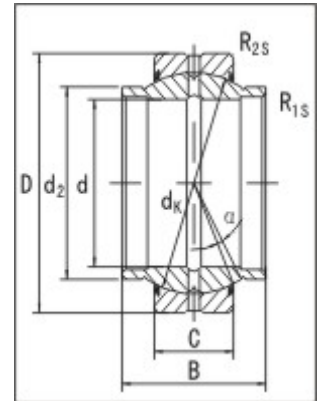
Part No.	Dimensioni - Dimensions mm									Load ratings kN		Peso Weight kg
	d	d <sub>2</sub>	D	B	C	d <sub>k</sub>	R <sub>1s</sub> min	R <sub>2s</sub> min	a ≈	dyn C	stat C <sub>0</sub>	
<b>GE70LO</b>	70	79	105	70	40	92	1.0	1.0	4	315	1560	1.70
<b>GE80LO</b>	80	91	120	80	45	105	1.0	1.0	4	400	2000	2.40
<b>GE90LO</b>	90	99	130	90	50	115	1.0	1.0	4	488	2440	3.20
<b>GE100LO</b>	100	113	150	100	55	130	1.0	1.0	4	607	3030	4.80
<b>GE110LO</b>	110	124	160	110	55	140	1.0	1.0	4	654	3270	5.78
<b>GE125LO</b>	125	138	180	125	70	160	1.0	1.0	4	950	4750	8.49
<b>GE160LO</b>	160	177	230	160	80	200	1.0	1.0	4	1370	6800	16.5



## Snodi Sferici Radiali

### Radial spherical plain bearings

#### GE..HO 2RS



- Anello esterno senza scanalatura circonferenziale - Outer ring with single split in axial direction.
- Anello interno con estensione cilindrica su entrambi i lati - Inner ring with cylindrical extensions at both sides

Scanalature e fori di lubrificazione su anello interno e esterno per il tipo ES - Lubricating grooves and holes in the outer and inner rings of type ES.

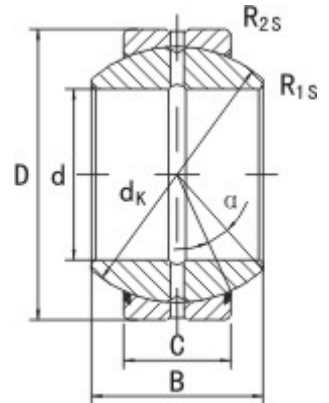
Anello esterno a due tenute stagne nel tipo 2RS - Outer ring of type-2RS with lip seals in both sides.

Fosfatizzati su entrambi gli anelli - Both outer and inner rings are properly phosphate treated.

Part No.	Dimensioni - Dimension mm										Load ratings kN		Peso Weight kg
	d	d <sub>2</sub>	D	B	C	d <sub>k</sub>	R <sub>1s</sub> min	R <sub>2s</sub> min	a ≈	dyn C	stat C <sub>0</sub>		
GE20HO2RS	20	24	35	24	12	29	0.2	0.3	3	30	146	0.057	
GE25HO2RS	25	29	42	29	16	35.5	0.2	0.6	3	48	240	0.10	
GE30HO2RS	30	34.2	47	30	18	40.7	0.2	0.6	3	62	310	0.14	
GE35HO2RS	35	40	55	35	20	47	0.3	1.0	3	80	400	0.24	
GE40HO2RS	40	45	62	38	22	53	0.3	1.0	3	100	500	0.29	
GE45HO2RS	45	51.5	68	40	25	60	0.3	1.0	3	127	640	0.43	
GE50HO2RS	50	56.5	75	43	28	66	0.3	1.0	3	156	780	0.54	
GE60HO2RS	60	67.7	90	54	36	80	0.3	1.0	3	245	1220	1.10	
GE70HO2RS	70	78	105	65	40	92	0.3	1.0	3	315	1560	1.60	
GE80HO2RS	80	90	120	74	45	105	0.3	1.0	3	400	2000	2.40	



## Snodi Sferici Radiali Radial spherical plain bearings GEZ..ES, GEZ..ES 2RS



Come il tipo GE... ES o GE...ES 2RS - Design features same as GE..ES or GE..ES 2RS.

Dimensioni in pollici -In inch dimension series.

Part No.	Dimensioni – Dimensions mm								Load ratings kN		Peso Weight kg
	d	D	B	C	dk	R <sub>1s</sub> min	R <sub>2s</sub> min	a ≈	dyn C	stat C <sub>0</sub>	
GEZ12ES	12.70	22.225	11.10	9.525	19	0.3	0.6	6	13	41	0.022
GEZ15ES	15.875	26.988	13.894	11.913	22	0.3	0.6	6	22	65	0.036
GEZ19ES	19.05	31.750	16.662	14.275	27.5	0.3	0.6	6	31	95	0.053
GEZ22ES	22.225	36.513	19.431	16.662	32	0.3	0.6	6	42	127	0.085
GEZ25ES - GEZ25ES2RS	25.40	41.275	22.235	19.05	35.5	0.3	0.6	6	56	166	0.121
GEZ31ES - GEZ31ES2RS	31.75	50.80	27.762	23.80	45.5	0.6	0.6	6	86	260	0.232
GEZ34ES - GEZ34ES2RS	34.925	55.663	30.150	26.187	49	0.6	1.0	6	102	310	0.351
GEZ38ES - GEZ38ES2RS	38.10	61.913	33.325	28.575	53	0.6	1.0	6	125	375	0.422
GEZ44ES - GEZ44ES2RS	44.45	71.438	38.887	33.325	63.9	0.6	1.0	6	170	510	0.641
GEZ50ES - GEZ50ES2RS	50.80	80.963	44.450	38.10	73	0.6	1.0	6	224	670	0.932
GEZ57ES - GEZ57ES2RS	57.15	90.488	55.013	42.85	82	0.6	1.0	6	280	850	1.33
GEZ63ES - GEZ63ES2RS	63.50	100.013	55.550	47.625	92	0.6	1.0	6	355	1060	1.85
GEZ69ES - GEZ69ES2RS	69.85	111.125	61.112	52.375	100	1.0	1.0	6	415	1250	2.42
GEZ76ES - GEZ76ES2RS	76.20	120.650	66.675	57.15	109.5	1.0	1.0	6	500	1500	3.10
GEZ82ES - GEZ76ES2RS	82.55	130.175	72.238	61.90	120	1.0	1.0	6	585	1760	3.82



**MONDIALTECH**  
Forniture Industriali

Via Raimondo Dalla Costa 240/b  
41100 MODENA - ITALY  
Tel. +39 059 256090 Fax. +39 059 260883  
Codice R.E.A. 354046  
Partita IVA E. Codice Fiscale: 03061810366  
e-Mail: [monditecinfo@mondialtech.net](mailto:monditecinfo@mondialtech.net)  
Web: <http://www.mondialtech.net>

Vasto assortimento di Cuscinetti SKF - FAG

**LK**  
Pagamenti di Qualità

**CSC**  
Cuscinetti Standard

**MONDIAL**  
Cuscinetti a Balli

Part No.	Dimensioni – Dimensions mm								Load ratings kN		Peso Weight kg
	d	D	B	C	dk	R <sub>1s</sub> min	R <sub>2s</sub> min	a ≈	dyn C	stat C <sub>0</sub>	
<b>GEZ88ES - GEZ88ES2RS</b>	88.90	139.70	77.775	66.675	130	1.0	1.0	6	680	2040	4.79
<b>GEZ95ES - GEZ95ES2RS</b>	95.250	149.225	83.337	71.425	137	1.0	1.0	6	780	2360	5.80
<b>GEZ101ES - GEZ101ES2RS</b>	101.60	158.750	88.900	76.200	146	1.0	1.0	6	900	2650	7.00
<b>GEZ114ES - GEZ114ES2RS</b>	114.30	177.800	100.013	85.725	64.5	1.0	1.0	6	1120	3400	9.80
<b>GEZ120ES - GEZ120ES2RS</b>	120.65	187.325	105.562	90.475	173.5	1.0	1.0	6	1250	3750	11.5

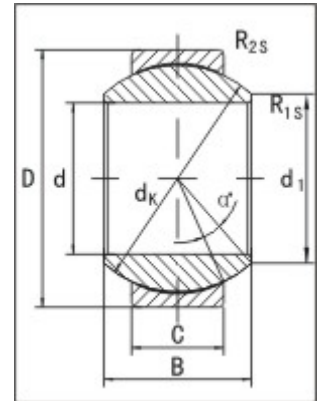




# Snodi Sferici Radiali

## Radial spherical plain bearings

### GE..UK



Anello esterno pressato sull'anello interno -Outer ring pressed around inner ring.

Anello esterno con accoppiamento su PTFE -Outer race lined with PTFE composite material.

Superficie sferica dell'anello interno cromata -Spherical surface of inner ring chromium plated.

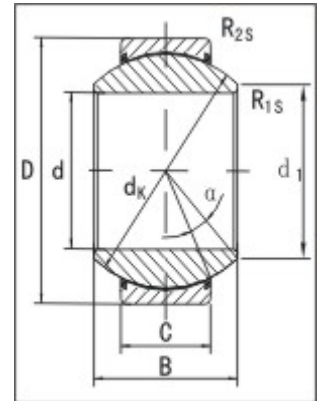
Part No.	Dimensioni – Dimensions mm									Load ratings kN		Peso Weight kg
	d	D	B	C	d <sub>1</sub> min	d <sub>k</sub> min	R <sub>1s</sub> min	R <sub>2s</sub> min	a ≈	dyn C	stat C <sub>0</sub>	
GE6UK	6	14	6	4	8	10	0.3	0.3	13	3.6	9.1	0.004
GE8UK	8	16	8	5	10	13	0.3	0.3	15	5.8	14	0.008
GE10UK	10	19	9	6	13	16	0.3	0.3	12	8.6	21	0.011
GE12UK	12	22	10	7	15	18	0.3	0.3	10	11	28	0.015
GE15UK	15	26	12	9	18	22	0.3	0.3	8	18	45	0.027
GE17UK	17	30	14	10	20	25	0.3	0.3	10	22	56	0.041
GE20UK	20	35	16	12	24	29	0.3	0.3	9	31	78	0.066
GE25UK	25	42	20	16	29	35.5	0.6	0.6	7	51	127	0.119
GE30UK	30	47	22	18	34	40.7	0.6	0.6	6	65	166	0.163



## Snodi Sferici Radiali

### Radial spherical plain bearings

#### GE..UK 2RS



Anello esterno con accoppiamento su PTFE -Outer race lined with PTFE fabric.

Anello esterno con tenuta su entrambi i lati -Outer ring with lip seals in both sides.

Superficie sferica dell'anello interno cromata -Spherical surface of inner ring chromium plated.

Anello esterno con trattamento di fosfatizzazione -Outer ring properly phosphate treated.

Part No.	Dimensioni – Dimensions mm									Load ratings kN		Peso Weight kg
	d	D	B	C	d <sub>1</sub> min	d <sub>k</sub>	R <sub>1s</sub> min	R <sub>2s</sub> min	α ≈	dyn C	stat C <sub>0</sub>	
GE15UK2RS	15	26	12	9	18	22	0.3	0.3	9	26	52	0.035
GE17UK2RS	17	30	14	10	20	25	0.3	0.3	10	30	60	0.041
GE20UK2RS	20	35	16	12	24	29	0.3	0.3	9	42	83	0.066
GE25UK2RS	25	42	20	16	29	35.5	0.6	0.6	7	68	137	0.119
GE30UK2RS	30	47	22	18	34	40.7	0.6	0.6	6	88	176	0.153
GE35UK2RS	35	55	25	20	39	47	0.6	1.0	6	112	224	0.233
GE40UK2RS	40	62	28	22	45	53	0.6	1.0	7	140	280	0.306
GE45UK2RS	45	68	32	25	50	60	0.6	1.0	7	180	360	0.427
GE50UK2RS	50	75	35	28	55	66	0.6	1.0	6	220	440	0.546
GE60UK2RS	60	90	44	36	66	74	1.0	1.0	6	345	695	1.04
GE70UK2RS	70	105	49	40	77	80	1.0	1.0	6	440	880	1.55



**MONDIALTECH**  
Forniture Industriali

Via Raimondo Dalla Costa 240/b  
41100 MODENA - ITALY  
Tel. +39 059 250090 Fax: +39 059 260083  
Codice R.E.A. 354046  
Partita IVA E Codice Fiscale: 03061810366  
e-Mail: [monditecinfo@mondialtech.net](mailto:monditecinfo@mondialtech.net)  
Web: <http://www.mondialtech.net>

Vasto assortimento di Cuscinetti SKF - FAG

**LK**  
Supporto di Qualità

**CSC**  
Cuscinetti Standard

**MONDIAL**  
Cuscinetti a Balli

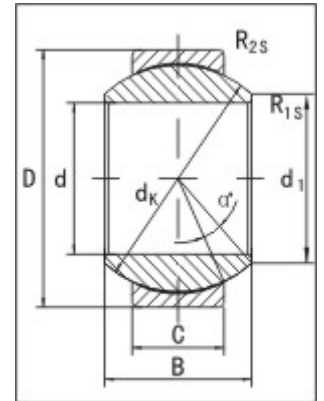
Part No.	Dimensioni – Dimensions mm									Load ratings kN		Peso Weight kg
	d	D	B	C	d <sub>1</sub> min	d <sub>k</sub>	R <sub>1s</sub> min	R <sub>2s</sub> min	$\frac{1}{\Delta}$ ≈	dyn C	stat C <sub>0</sub>	
<b>GE80UK2RS</b>	80	120	55	45	88	92	1.0	1.0	6	567	1140	2.31
<b>GE90UK2RS</b>	90	130	60	50	98	105	1.0	1.0	5	690	1370	2.75
<b>GE100UK2RS</b>	100	150	70	55	109	115	1.0	1.0	7	858	1730	4.45
<b>GE110UK2RS</b>	110	160	70	55	120	130	1.0	1.0	6	924	1860	4.82
<b>GE120UK2RS</b>	120	180	85	70	130	140	1.0	1.0	6	1340	2700	8.05



## Snodi Sferici Radiali

### Radial spherical plain bearings

#### GE..FW



Anello esterno pressato sull'anello interno -Outer ring pressed around inner ring.

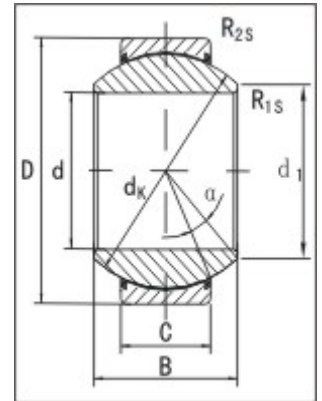
Anello esterno con accoppiamento su PTFE -Outer race lined with PTFE composite material.

Superficie sferica dell'anello interno cromata -Spherical surface of inner ring chromium plated.

Part No.	Dimensioni – Dimensions mm								Load ratings kN		Peso Weight kg
	d	D	B	C	dk	R <sub>1s</sub> min	R <sub>2s</sub> min	a ≈	dyn C	stat C <sub>0</sub>	
GE6FW	6	16	9	5	13	0.3	0.3	21	5.8	14	0.008
GE8FW	8	19	11	6	16	0.3	0.3	21	8.6	21	0.014
GE10FW	10	22	12	7	18	0.3	0.3	18	11	28	0.021
GE12FW	12	26	15	9	22	0.3	0.3	18	18	45	0.033
GE15FW	15	30	16	10	25	0.3	0.3	16	22	56	0.049
GE17FW	17	35	20	12	29	0.3	0.3	19	31	78	0.083
GE20FW	20	42	25	16	35.5	0.3	0.3	17	51	127	0.153
GE25FW	25	47	28	18	40.7	0.6	0.6	17	65	166	0.203
GE30FW	30	55	32	20	47	0.6	0.6	17	83	212	0.304



## Snodi Sferici Radiali Radial spherical plain bearings GE..FW 2RS



Anello esterno con accoppiamento su PTFE -Outer race lined with PTFE fabric.

Anello esterno con tenuta su entrambi i lati -Outer ring with lip seals in both sides.

Superficie sferica dell'anello interno cromata -Spherical surface of inner ring chromium plated.

Anello esterno con trattamento di fosfatizzazione -Outer ring properly phosphate treated.

Part No.	Dimensioni – Dimensions mm								Load ratings kN		Peso Weight kg
	d	D	B	C	dk	R <sub>1s</sub> min	R <sub>2s</sub> min	a ≈	dyn C	stat C <sub>0</sub>	
GE15FW2RS	15	30	16	10	25	0.3	0.3	16	22.4	56.0	0.046
GE17FW2RS	17	35	20	12	29	0.3	0.3	19	31.5	78.0	0.078
GE20FW2RS	20	42	25	16	35.5	0.6	0.6	17	51.0	127	0.15
GE25FW2RS	25	47	28	18	40.7	0.6	0.6	17	65.5	166	0.19
GE30FW2RS	30	55	32	20	47	0.6	1.0	17	112	224	0.29
GE35FW2RS	35	62	35	22	53	0.6	1.0	16	140	280	0.39
GE40FW2RS	40	68	40	25	60	0.6	1.0	17	180	360	0.52
GE45FW2RS	45	75	43	28	66	0.6	1.0	15	220	440	0.68



**MONDIALTECH**  
Forniture Industriali

Via Raimondo Dalla Costa 240/b  
41100 MODENA - ITALY  
Tel. +39 059 256090 Fax: +39 059 260883  
Codice R.E.A. 354046  
Partita IVA E. Codice Fiscale: 03061810366  
e-Mail: [monditecinfo@mondialtech.net](mailto:monditecinfo@mondialtech.net)  
Web: <http://www.mondialtech.net>

Vasto assortimento di Cuscinetti SKF - FAG

**LK**  
Supporto di Qualità

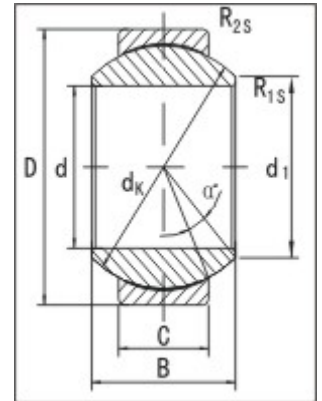
**CSC**  
Cuscinetti Standard

**MONDIAL**  
Cuscinetti a Rulli

Part No.	Dimensioni – Dimensions mm								Load ratings kN		Peso Weight kg
	d	D	B	C	d <sub>k</sub>	R <sub>1s</sub> min	R <sub>2s</sub> min	a ≈	dyn C	stat C <sub>0</sub>	
GE50FW2RS	50	90	56	36	80	0.6	1.0	17	345	695	1.40
GE60FW2RS	60	105	63	40	92	1.0	1.0	17	440	880	2.00
GE70FW2RS	70	120	70	45	105	1.0	1.0	16	570	1140	2.90
GE80FW2RS	80	130	75	50	115	1.0	1.0	14	695	1370	3.50
GE90FW2RS	90	150	85	55	130	1.0	1.0	15	865	1730	5.40
GE100FW2RS	100	160	85	55	140	1.0	1.0	14	930	1860	5.90



## Snodi Sferici Radiali Radial spherical plain bearings SGE..UK

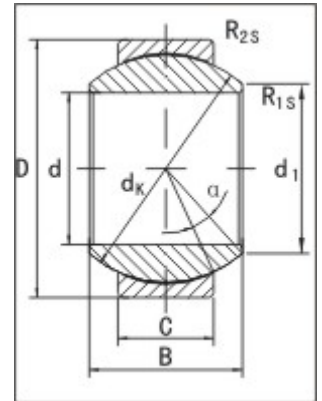


Come GE...UK ma in Acciaio Inox -Design features same as series GE..UK, but in stainless steel.

Part No.	Dimensioni – Dimensions mm									Load ratings kN		Peso Weight kg
	d	D	B	C	d <sub>1</sub> min	d <sub>k</sub>	R <sub>1s</sub> min	R <sub>2s</sub> min	a ≈	dyn C	stat C <sub>0</sub>	
SGE6UK	6	14	6	4	8	10	0.3	0.3	13	3.6	9.1	0.004
SGE8UK	8	16	8	5	10	13	0.3	0.3	15	5.8	14	0.008
SGE10UK	10	19	9	6	13	16	0.3	0.3	12	8.6	21	0.011
SGE12UK	12	22	10	7	15	18	0.3	0.3	10	11	28	0.015
SGE15UK	15	26	12	9	18	22	0.3	0.3	8	18	45	0.027
SGE17UK	17	30	14	10	20	25	0.3	0.3	10	22	56	0.041
SGE20UK	20	35	16	12	24	29	0.3	0.3	9	31	78	0.066
SGE25UK	25	42	20	16	29	35.5	0.6	0.6	7	51	127	0.119
SGE30UK	30	47	22	18	34	40.7	0.6	0.6	6	65	166	0.163



## Snodi Sferici Radiali Radial spherical plain bearings SGE..FW



Come GE...FW ma in Acciaio Inox -Design features same as series GE..FW, but in stainless steel.

Part No.	Dimensioni – Dimensions mm									Load ratings kN		Peso Weight kg
	d	D	B	C	d <sub>1</sub> min	d <sub>k</sub> min	R <sub>1s</sub> min	R <sub>2s</sub> min	a ≈	dyn C	stat C <sub>0</sub>	
SGE6FW	6	16	9	5	9	13	0.3	0.3	21	5.8	14	0.008
SGE8FW	8	19	11	6	11	16	0.3	0.3	21	8.6	21	0.014
SGE10FW	10	22	12	7	13	18	0.3	0.3	18	11	28	0.021
SGE12FW	12	26	15	9	16	22	0.3	0.3	18	18	45	0.033
SGE15FW	15	30	16	10	19	25	0.3	0.3	16	22	56	0.049
SGE17FW	17	35	20	12	21	29	0.3	0.3	19	31	78	0.083
SGE20FW	20	42	25	16	24	35.5	0.3	0.3	17	51	127	0.153
SGE25FW	25	47	28	18	29	40.7	0.6	0.6	17	65	166	0.203
SGE30FW	30	55	32	20	34	47	0.6	0.6	17	83	212	0.304

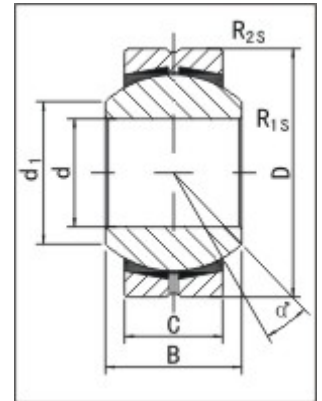




# Snodi Sferici Radiali

## Radial spherical plain bearings

### GEBK..S



Anello esterno con riporto in bornzo - Outer race lined with bronze liner.

Scanalatura e fori di lubrificazione sull'anello esterno - With lubricating groove and holes in the outer ring.

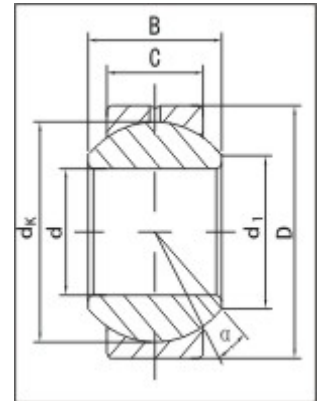
Part No.	Dimensioni – Dimensions mm								Load ratings kN		Peso Weight kg
	d	D	B	C	d <sub>1</sub>	R <sub>1s</sub> min	R <sub>2s</sub> min	a ≈	dyn C	stat C <sub>0</sub>	
GEBK5S	5	16	8	6	7.7	0.3	0.3	13	3.3	7.8	0.009
GEBK6S	6	18	9	6.75	9.0	0.3	0.3	13	4.3	9.8	0.013
GEBK8S	8	22	12	9	10.4	0.3	0.3	14	6.8	16	0.024
GEBK10S	10	26	14	10.5	12.9	0.3	0.6	14	10	23	0.039
GEBK12S	12	30	16	12	15.4	0.3	0.6	13	13	31	0.058
GEBK14S	14	34	19	13.5	19.4	0.3	0.6	16	17	40	0.084
GEBK16S	16	38	21	15	19.4	0.3	0.6	15	21	50	0.111
GEBK18S	18	42	23	16.5	21.9	0.3	0.6	15	26	61	0.160
GEBK20S	20	46	25	18	24.4	0.3	0.6	15	31	73	0.210
GEBK22S	22	50	28	20	25.8	0.3	0.6	15	38	88	0.260
GEBK25S	25	56	31	22	19.6	0.6	0.6	15	47	110	0.390
GEBK30S	30	66	37	25	34.8	0.6	0.6	17	63	148	0.610



## Snodi Sferici Radiali

### Radial spherical plain bearings

#### G..PB



Anello esterno in bronzo - Outer ring in bronze.

Anello esterno pressato sull'anello interno - Outer ring pressed around inner ring.

Con foro di lubrificazione sull'anello esterno - With lubricating holes in the outer ring.

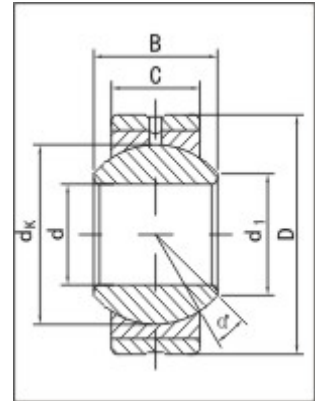
Part No.	Dimensioni – Dimensions mm							Load ratings kN		Peso Weight kg
	d	d <sub>1</sub>	B	C	D	d <sub>k</sub>	a ≈	dyn C	stat C <sub>0</sub>	
<b>G5PB</b>	5	7.7	8	6	13	11.1	13	6.4	15	0.007
<b>G6PB</b>	6	8.9	9	6.75	16	12.7	13	8.3	19	0.010
<b>G8PB</b>	8	10.3	12	9	19	15.8	13	13	31	0.016
<b>G10PB</b>	10	12.9	14	10.5	22	19.0	13	19	43	0.031
<b>G12PB</b>	12	15.4	16	12	26	22.2	13	24	58	0.065
<b>G14PB</b>	14	16.8	19	13.5	28	25.4	15	31	74	0.090
<b>G16PB</b>	16	19.3	21	15	32	28.5	15	39	92	0.100
<b>G18PB</b>	18	21.8	23	16.5	35	31.7	15	48	112	0.125
<b>G20PB</b>	20	24.3	25	18	40	34.9	15	57	135	0.180
<b>G22PB</b>	22	25.8	28	20	42	38.1	15	71	164	0.210
<b>G25PB</b>	25	29.5	31	22	47	42.8	15	87	203	0.295
<b>G30PB</b>	30	34.8	37	25	55	50.8	15	116	273	0.425
<b>G35PB</b>	35	37.7	43	28	62	57.1	16	147	344	0.500
<b>G40PB</b>	40	45.2	49	33	75	66.6	17	202	473	0.900
<b>G50PB</b>	50	56.6	60	45	90	82.5	12	341	798	1.640



# Snodi Sferici Radiali

## Radial spherical plain bearings

### S..PB



Come G...PB con anello in Acciaio - Made up of G..PB and steel sleeve.

Scanalatura e foro di lubrificazione sull'anello esterno - With lubricating groove and holes in the outer ring.

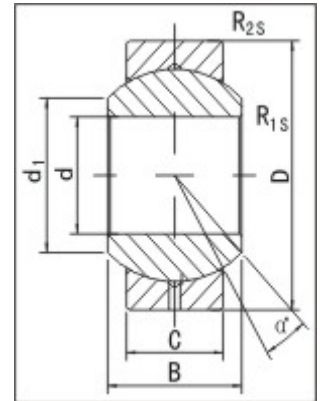
Part No.	Dimensioni – Dimensions mm							Load ratings kN		Peso Weight kg
	d	d <sub>1</sub>	B	C	D	d <sub>k</sub>	a ≈	dyn C	stat C <sub>0</sub>	
<b>S5PB</b>	5	7.7	8	6	16	11.1	13	6.4	15	0.009
<b>S6PB</b>	6	8.9	9	6.75	18	12.7	13	8.3	19	0.013
<b>S8PB</b>	8	10.3	12	9	22	15.8	13	13	31	0.024
<b>S10PB</b>	10	12.9	14	10.5	26	19.0	13	19	43	0.040
<b>S12PB</b>	12	15.4	16	12	30	22.2	13	24	58	0.080
<b>S14PB</b>	14	16.8	19	13.5	34	25.4	15	31	74	0.110
<b>S16PB</b>	16	19.3	21	15	38	28.5	15	39	92	0.130
<b>S18PB</b>	18	21.8	23	16.5	42	31.7	15	48	112	0.170
<b>S20PB</b>	20	24.3	25	18	46	34.9	15	57	135	0.230
<b>S22PB</b>	22	25.8	28	20	50	38.1	15	71	164	0.280
<b>S25PB</b>	25	29.5	31	22	56	42.8	15	87	203	0.390
<b>S30PB</b>	30	34.8	37	25	66	50.8	15	116	273	0.610



## Snodi Sferici Radiali

### Radial spherical plain bearings

#### GEBJ..S



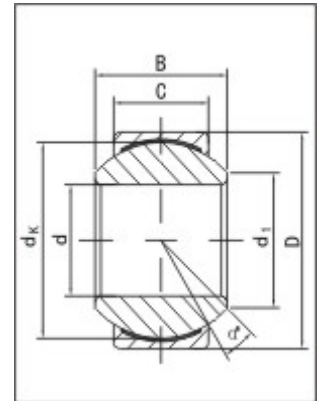
Anello esterno pressato sull'anello interno - Outer ring pressed around inner ring.

Con foro di lubrificazione sull'anello esterno - With lubricating groove and holes in the outer ring.

Part No.	Dimensioni – Dimensions mm									Load ratings kN		Peso Weight kg
	d	D	B	C	d <sub>1</sub> min	d <sub>k</sub>	R <sub>1s</sub> min	R <sub>2s</sub> min	α̂ ≈	dyn C	stat C <sub>0</sub>	
GEBJ5S	5	13	8	6	7.7		0.3	0.3	13	3.2	9	0.007
GEBJ6S	6	16	9	6.75	9.0		0.3	0.3	13	4.1	12	0.010
GEBJ8S	8	19	12	9	10.4		0.3	0.3	13	6.5	20	0.016
GEBJ10S	10	22	14	10.5	12.9		0.3	0.6	13	9.6	28	0.031
GEBJ12S	12	26	16	12	15.4		0.3	0.6	13	12	37	0.055
GEBJ14S	14	28	19	13.5	16.9		0.3	0.6	15	16	49	0.078
GEBJ16S	16	32	21	15	19.4		0.3	0.6	15	20	61	0.095
GEBJ18S	18	35	23	16.5	21.9		0.3	0.6	15	25	74	0.140
GEBJ20S	20	40	25	18	24.4		0.3	0.6	15	30	89	0.180
GEBJ22S	22	42	28	20	25.8		0.3	0.6	15	36	108	0.210
GEBJ25S	25	47	31	22	29.6		0.6	0.6	15	45	130	0.350
GEBJ30S	30	55	37	25	34.8		0.6	0.6	15	61	178	0.560



## Snodi Sferici Radiali Radial spherical plain bearings G..PW



Anello esterno in Ottone - Outer ring in brass.

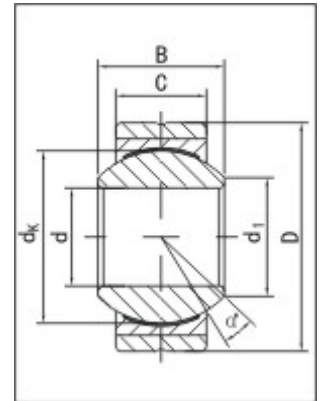
Stesse dimensioni del tipo G...PB - Dimensions same as G..PB.

Riporto in PTFE sul diametro interno dell'Anello esterno-Outer race lined with PTFE fabric composite material.

Part No.	Dimensioni – Dimensions mm							Load ratings kN		Peso Weight kg
	d	d <sub>1</sub>	B	C	D	d <sub>k</sub>	Á ≈	dyn C	stat C <sub>0</sub>	
G5PW	5	7.7	8	6	13	11.1	13	6.2	17	0.007
G6PW	6	8.9	9	6.75	16	12.7	13	7.5	22	0.010
G8PW	8	10.3	12	9	19	15.8	13	12	36	0.016
G10PW	10	12.9	14	10.5	22	19.0	13	17	50	0.031
G12PW	12	15.4	16	12	26	22.2	13	22	67	0.065
G14PW	14	16.8	19	13.5	28	25.4	15	28	86	0.090
G16PW	16	19.3	21	15	32	28.5	15	35	107	0.100
G18PW	18	21.8	23	16.5	35	31.7	15	47	131	0.125
G20PW	20	24.3	25	18	40	34.9	15	51	157	0.180
G22PW	22	25.8	28	20	42	38.1	15	62	191	0.210
G25PW	25	29.5	31	22	47	42.8	15	77	236	0.295
G30PW	30	34.8	37	25	55	50.8	15	103	318	0.425
G35PW	35	37.7	43	28	62	57.1	16	130	400	0.500
G40PW	40	45.2	49	33	75	66.6	17	179	550	0.900
G50PW	50	56.6	60	45	90	82.5	12	302	928	1.640



## Snodi Sferici Radiali Radial spherical plain bearings S..PW



Identico a G...PW con anello in Acciaio - Made up of G..PW and steel sleeve.

Part No.	Dimensioni – Dimensions mm							Load ratings kN		Peso Weight kg
	d	d <sub>1</sub>	B	C	D	d <sub>k</sub>	a ≈	dyn C	stat C <sub>0</sub>	
S5PW	5	7.7	8	6	16	11.1	13	6.2	17	0.009
S6PW	6	8.9	9	6.75	18	12.7	13	7.5	22	0.013
S8PW	8	10.3	12	9	22	15.8	13	12	36	0.024
S10PW	10	12.9	14	10.5	26	19.0	13	17	50	0.040
S12PW	12	15.4	16	12	30	22.2	13	22	67	0.080
S14PW	14	16.8	19	13.5	34	25.4	15	28	86	0.110
S16PW	16	19.3	21	15	38	28.5	15	35	107	0.130
S18PW	18	21.8	23	16.5	42	31.7	15	43	131	0.170
S20PW	20	24.3	25	18	46	34.9	15	51	157	0.230
S22PW	22	25.8	28	20	50	38.1	15	62	191	0.280
S25PW	25	29.5	31	22	56	42.8	15	77	236	0.390
S30PW	30	34.8	37	25	66	50.8	15	103	318	0.610



## Teste a Snodo e Teste a Snodo per Idraulica- Rod Ends & Hydraulic Rod Ends

### Tabella di Comparazione - Interchange table

MONDIALT.	SWEDEN	GERMANY	GERMANY	GERMANY	CHINA	JAPAN	JAPAN	ITALY	JAPAN
LSB	SKF	FAG	ELGES	ASK	LS	IKO	THK	LSK	MTR
GIR..UK	SI..C	SI..C	GIR..UK	EJ..D	SI..C			GIR..UK	
GIR..UK 2RS	SAL..TE 2RS	SI..ES 2RS	GIR..UK 2RS	EJ..D 2RS	SI..ET 2RS			GIR..UK 2RS	
GAR..UK	SA..C	SA..C	GAR..UK	EA..D	SA..C			GAR..UK	
GAR..UK 2RS	SAA..TE 2RS	SA..TE 2RS	GAR..UK 2RS	EA..D 2RS	SA..ET 2RS			GAR..UK	
GIL..UK	SIL..C	SIL..C	GIL..UK	EJL..D	SIL..C			GIL..UK	
GIL..UK 2RS	SILA..TE 2RS	SIL..TE 2RS	GIL..UK 2RS	EJL..D 2RS	SIL..ET 2RS			GIL..UK 2RS	
GAL..UK	SAL..C	SAL..C	GAL..UK	EAL..D	SAL..C			GAL..UK	
GAL..UK 2RS	SALA..TE 2RS	SAL..TE 2RS	GAL..UK 2RS	EAL..D 2RS	SAL..ET 2RS			GAL..UK 2RS	
SQ..RS					SQ..RS	LHSA..	RBL..		
SQ..RS-1							RBL..B		
SQL..RS					SQL..RS		RBL..L		
SQD..					SQD..		ABS..		
SQD..-1							ABS..B		
SQZ..RS					SQZ..RS		RBI..		
SQZ..RS-1							RBI..B		
SQZL..RS					SQZL..RS		RBI..L		
GIHR..DO	SIRD..ES		GIHR..DO						
GIHR-K..DO	SIR..ES		GIHR-K..DO		SIR..ES				
GIHL..DO	SILD..ES		GIHL..DO						
GIHL-K..DO	SILR..ES		GIHL-K..DO		SILR..ES				
GIHN-K..LO	SIQG..ES		GIHN-K..LO		SIGEW..ES				
GK..DO	SC..ES		GK..DO		SK..ES				
GF..DO	SCF..ES		GF..DO		SF..ES				
GIHO-K..DO			GIHO-K..DO						
SI..E	SI..E	SI..E	GIR..DO	EJ..	SI..E			GIR..E	

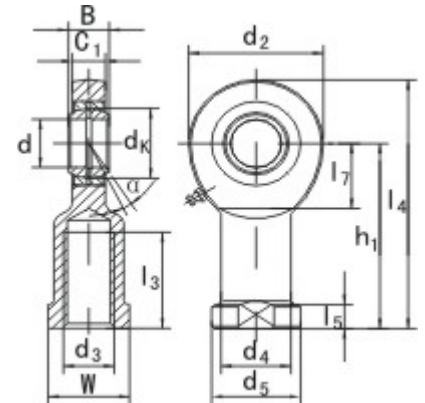


MONDIALT.	SWEDEN	GERMANY	GERMANY	GERMANY	CHINA	JAPAN	JAPAN	ITALY	JAPAN
<b>LSB</b>	SKF	FAG	ELGES	ASK	LS	IKO	THK	LSK	MTR
<b>SI..ES</b>	SIA..ES	SI..ES	GIR..DO	EJ..	SI..ES			GIR..ES	
<b>SI..ES 2RS</b>	SLA..ES 2RS	SI..ES 2RS	GIR..DO 2RS	EJ..2RS	SI..ES 2RS			GIR..ES 2RS	
<b>SA..E</b>	SA..E	SA..E	GAR..DO	EA..	SA..			GAR..E	
<b>SA..ES</b>	SAA..ES	SA..ES	GAR..DO	EA..	SA..ES			GAR..ES	
<b>SA..ES 2RS</b>	SAA..ES 2RS	SA..ES 2RS	GAR..DO 2RS	EA..2RS	SA..ES 2RS			GAR..ES 2RS	
<b>SIL..E</b>	SIL..E	SIL..E	GIL..DO	EJL..	SIL..E			GIL..E	
<b>SIL..ES</b>	SIL..ES	SIL..ES	GIL..DO	EJL..	SIL..ES			GIL..ES	
<b>SIL..ES 2RS</b>	SIAL..ES 2RS	SIL..ES 2RS	GIL..DO 2RS	EJL..2RS	SIL..ES 2RS			GIL..ES 2RS	
<b>SAL..E</b>	SAL..E	SAL..E	GAL..DO	EAL..	SAL..E			GAL..E	
<b>SAL..ES</b>	SALA..ES	SAL..ES	GAL..DO	EAL..	SAL..ES			GAL..ES	
<b>SAL..ES 2RS</b>	SALA..ES 2RS	SAL..ES 2RS	GAL..DO 2RS	EAL..2RS	SAL..ES 2RS			GAL..ES 2RS	
<b>SI..T/K</b>	SIKB..F		GIKFR..FW	KI..-D	SIJK..C	PHS..EC		TSF..C	DF..
<b>SA..T/K</b>	SAKB..F		GAKFR..FW	KA..-D	SAJK..C	POS..EC		TSM..C	DM..
<b>SIL..T/K</b>	SILKB..F		GIKFL..PW	KIL..-D	SILJK..C	PHSL..EC		TSFL..C	DF..L
<b>SAL..T/K</b>	SALKB..F		GAKFL..PW	KAL..-D	SALJK..C	POSL..EC		TSML..C	SM..L
<b>SI..PK</b>				KI..-BD				NHS..T	
<b>SA..PK</b>				KA..-BD				NOS..T	
<b>SIL..PK</b>				KIL..-BD				NHS..TL	
<b>SAL..PK</b>				KAL..-BD				NOS..TL	
<b>RF..</b>	SIKAC..M		GIKF..PB	KI..-NIRO	SIBP..S	PHS..	PHS..	TSF..	BNF..
<b>RM..</b>	SAKAC..M		GAKF..PB	SA..-NIRO	SABP..S	POS..	POS..	TSM..	BNM..
<b>RFL..</b>	SILKAC..M		GIKL..PB	KIL..-NIRO	SILBP..S	PHSL..	PHS..	TSFL..	BNF..L
<b>RML..</b>	SALKAC..M		GAKL..PB	KAL..-NIRO	SALBP..S	POSL..	POS..	TSML..	BNM..L





## Testa a Snodo - Rod ends SI..E(S),SI..ES 2RS



Il corpo può essere con filettatura femmina Destra o Sinistra - Rod body with right or left-hand female thread.

Come Snodo Sferico Radiale GE..ES o GE..ES 2RS con il corpo-It is made up of a radial spherical plain bearing GE..E(S) or GE..ES 2RS and rod body.

Superficie del corpo Zincata la serie SI...ES è provvista di foro di lubr.o ingrassatore - Surface of rod body zinc plated, housing of SI..ES with a lubricating hole or grease nipple.

Part. No.	Dimension – Dimensions mm													Load ratings kN		Peso Weight kg	
	d	d <sub>3</sub> 6H	B	C <sub>1</sub>	L <sub>3</sub> min	W	d <sub>2</sub>	h <sub>1</sub>	L <sub>4</sub>	L <sub>5</sub>	d <sub>4</sub>	d <sub>5</sub>	d <sub>k</sub>	a ≈	dyn C		stat C <sub>0</sub>
SI6E*	6	M6x1.0	6	4.4	11	11	21	30	40.5	5	10	13	10	13	3.40	8.15	0.021
SI8E*	8	M8x1.25	8	6.0	15	14	24	36	48	5	12.5	16	13	15	5.50	12.9	0.039
SI10E*	10	M10x1.5	9	7.0	20	17	29	43	57.5	6.5	15	19	16	12	8.15	17.6	0.061
SI12E*	12	M12x1.75	10	8.0	23	19	34	50	67	6.5	17.5	22	18	11	10.8	24.5	0.096
SI15ES	15	M14x2.0	12	10	30	22	40	61	81	8	21	26	22	8	17.0	36.0	0.180
SI17ES	17	M16x2.0	14	11	34	27	46	67	90	10	24	30	25	10	21.2	45.0	0.220
SI20ES	20	M20x1.5	16	13	40	32	53	77	103.5	10	27.5	35	29	9	30.0	60.0	0.350
SI25ES	25	M24x2.0	20	17	48	36	64	94	126	12	33.5	42	35.5	7	48.0	83.0	0.640
SI30ES	30	M30x2.0	22	19	56	41	73	110	146.5	15	40	50	40.7	6	62.0	110	0.930
SI35ES	35	M36x3.0	25	21	60	50	82	125	166	15	47	58	47	6	80.0	146	1.30



Part. No.	Dimension – Dimensions mm													Load ratings kN			Peso Weight kg
	d	d <sub>3</sub>	B	C <sub>1</sub>	L <sub>3</sub>	W	d <sub>2</sub>	h <sub>1</sub>	L <sub>4</sub>	L <sub>5</sub>	d <sub>4</sub>	d <sub>5</sub>	d <sub>k</sub>	a	dyn	stat	
	6H			min										≈	C	C <sub>0</sub>	
SI40ES	40	M39x3.0	28	23	65	55	92	142	188	18	52	65	53	7	100	180	2.00
SI45ES	45	M42x3.0	32	27	65	60	102	145	196	20	58	70	60	7	127	240	2.50
SI50ES	50	M45x3.0	35	30	68	65	112	160	216	20	62	75	66	6	156	290	3.50
SI60ES	60	M52x3.0	44	38	70	75	135	175	242.5	20	70	88	80	6	245	450	5.50
SI70ES	70	M56x4.0	49	42	80	85	160	200	280	20	80	98	92	6	315	610	8.60
SI80ES	80	M64x4.0	55	47	85	100	180	230	320	25	95	110	105	6	400	750	12.0

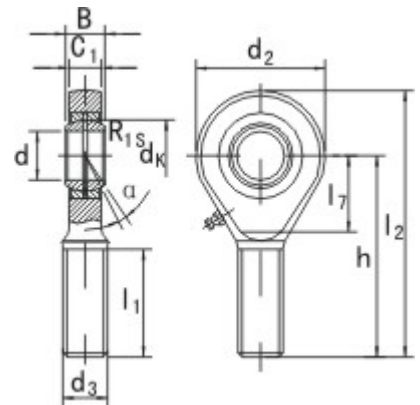
Per filetto Sinistro aggiungere suffisso "L" es. SIL30 ES - For left-hand thread, please add surffix "L", e.g. SIL30 ES.

Versione 2RS disponibilea partire dal SI25 ES 2RS-For bearings  $d \geq 15$ , SI..ES 2RS also available, e.g. SI25ES 2RS.

Foro di lubr. o ingrassatore non disponibile sui tipi marcati "\*" -Lubricating hole or grease nipple isn't available for the sizes marked "\*".



## Testa a Snodo - Rod ends SA..E(S), SA..ES 2RS



Il corpo può essere con filettatura femmina Destra o Sinistra - Rod body with right or left-hand female thread.

Come Snodo Sferico Radiale GE..ES o GE..ES 2RS con il corpo - It is made up of a radial spherical plain bearing GE..E(S) or GE..ES 2RS and rod body.

Superficie del corpo Zincata la serie SA...ES è provvista di foro di lubr.o ingrassatore - Surface of rod body zinc plated, housing of SA..ES with a lubricating hole or grease nipple.

Part. No.	Dimensioni - Dimensions mm										Load ratings kN		Peso Weight kg		
	d	d <sub>3</sub>	B	C <sub>1</sub>	L <sub>1</sub>	d <sub>2</sub>	L <sub>7</sub>	h	L <sub>2</sub>	d <sub>k</sub>	R <sub>1s</sub>	a		dyn	stat
	6g				min		min					≈	C	C <sub>0</sub>	
SA6E*	6	M6x1.0	6	4.4	18	21	11	36	46.5	10	0.3	13	3.40	8.15	0.017
SA8E*	8	M8x1.25	8	6	22	24	14	42	54	13	0.3	15	5.50	12.9	0.029
SA10E*	10	M10x1.5	9	7	26	29	15	48	62.5	16	0.3	12	8.15	17.6	0.051
SA12E*	12	M12x1.75	10	8	28	34	17	54	71	18	0.3	11	10.8	24.5	0.086
SA15E*	15	M14x2.0	12	10	34	40	20	63	83	22	0.3	8	17.0	36.0	0.140
SA17E*	17	M16x2.0	14	11	36	46	23	69	92	25	0.3	10	21.2	45.0	0.190
SA20E*	20	M20x1.5	16	13	43	53	27	78	104.5	29	0.6	9	30.0	60.0	0.310
SA25E*	25	M24x2.0	20	17	53	64	32	94	126	35.5	0.6	7	48.0	83.0	0.560
SA30E*	30	M30x2.0	22	19	65	73	37	110	146.5	40.7	0.6	6	62.0	110	0.890
SA35E*	35	M36x3.0	25	21	82	82	41	140	181	47	0.6	6	80.0	146	1.40



Part. No.	Dimensioni – Dimensions mm											Load ratings kN			Peso Weight kg
	d	d <sub>3</sub>	B	C <sub>1</sub>	L <sub>1</sub>	d <sub>2</sub>	L <sub>7</sub>	h	L <sub>2</sub>	d <sub>k</sub>	R <sub>1s</sub>	a	dyn	stat	
		6g			min		min					≈	C	C <sub>0</sub>	
SA40E*	40	M39x3.0	28	23	86	92	46	150	196	53	0.6	7	100	180	1.80
SA45E*	45	M42x3.0	32	27	94	102	51	163	214	60	0.6	7	127	240	2.60
SA50E*	50	M45x3.0	35	30	107	112	56	185	241	66	0.6	6	156	290	3.40
SA60E*	60	M52x3.0	44	38	115	135	68	210	277.5	80	1.0	6	245	450	5.90
SA70E*	70	M56x4.0	49	42	125	160	80	235	315	92	1.0	6	315	610	8.20
SA80E*	80	M64x4.0	55	47	140	180	90	270	360	105	1.0	6	400	750	12.0

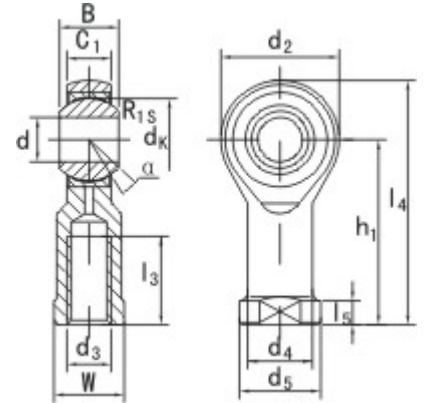
Per filetto Sinistro aggiungere suffisso "L" es. SAL30 ES - For left-hand thread, please add suffix "L", e.g. SAL30 ES.

Versione 2RS disponibile a partire dal SA25 ES 2RS - For bearings d ≥ 15, SI..ES 2RS also available, e.g. SI25ES 2RS.

Foro di lubr. o ingrassatore non disponibile sui tipi marcati "\*" - Lubricating hole or grease nipple isn't available for the sizes marked "\*".



## Teste a Snodo - Rod ends SI..T/K



Il corpo può essere con filettatura femmina Destra o Sinistra - Rod body with right or left-hand female thread.

Esente da lubrificazione - It is made up of a maintenance-free radial spherical.

Superficie del corpo zincata - Surface of rod body zinc plated.

Part No.	Dimensioni - Dimensions mm											Load ratings kN			Peso Weight kg		
	d	d <sub>3</sub> 6H	B	C <sub>1</sub>	L <sub>3</sub> min	W	d <sub>2</sub>	h <sub>1</sub>	L <sub>4</sub>	L <sub>5</sub>	d <sub>4</sub>	d <sub>5</sub>	d <sub>k</sub>	a ≈		dyn C	stat C <sub>0</sub>
SI5T/K	5	M5x0.8	8	6	10	9	18	27	36	4	8.5	11	11.11	13	5.70	6.00	0.016
SI6T/K	6	M6x1.0	9	6.75	12	11	20	30	40	5	10	13	12.70	13	7.20	7.65	0.022
SI8T/K	8	M8x1.25	12	9	16	14	24	36	48	5	12.5	16	15.875	14	11.60	12.9	0.047
SI10T/K	10	M10x1.5	14	10.5	20	17	28	43	57	6.5	15	19	19.05	13	14.5	18.0	0.077
SI10-1T/K	10	M10x1.25	14	10.5	20	17	28	43	57	6.5	15	19	19.05	13	14.5	18.0	0.077
SI12T/K	12	M12x1.25	16	12	22	19	32	50	66	6.5	17.5	22	22.225	13	17.0	24.0	0.100
SI12-1T/K	12	M12x1.75	16	12	22	19	32	50	66	6.5	17.5	22	22.225	13	17.0	24.0	0.100
SI14T/K	14	M14x2.0	19	13.5	25	22	36	57	75	8	20	25	25.40	16	24.0	31.0	0.160
SI14-1T/K	14	M14x1.5	19	13.5	25	22	36	57	75	8	20	25	25.40	16	24.0	31.0	0.160
SI16T/K	16	M16x2.0	21	15	28	22	42	64	85	8	22	27	28.575	15	28.5	39.0	0.220
SI16-1T/K	16	M16x1.5	21	15	28	22	42	64	85	8	22	27	28.575	15	28.5	39.0	0.220
SI18T/K	18	M18x1.5	23	16.5	32	27	44	71	93	10	25	31	31.75	15	42.5	47.5	0.320
SI20T/K	20	M20x1.5	25	18	33	30	50	77	102	10	27.5	34	34.925	14	42.5	57.0	0.420
SI22T/K	22	M22x1.5	28	20	37	32	54	84	111	12	30	38	38.10	15	57.0	68.0	0.540

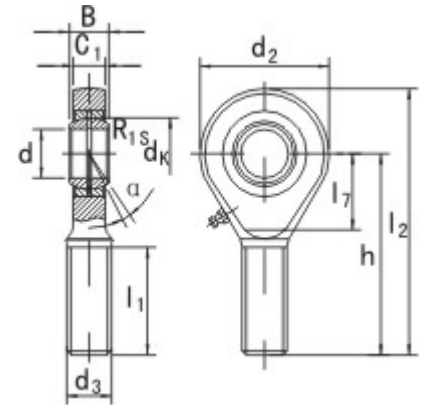


Part No.	Dimensioni – Dimensions mm													Load ratings kN			Peso Weight kg
	d	d <sub>3</sub> 6H	B	C <sub>1</sub>	L <sub>3</sub> min	W	d <sub>2</sub>	h <sub>1</sub>	L <sub>4</sub>	L <sub>5</sub>	d <sub>4</sub>	d <sub>5</sub>	d <sub>k</sub>	a ≈	dyn C	stat C <sub>0</sub>	
SI25T/K	25	M24x2.0	31	22	42	36	60	94	124	12	33.5	42	42.85	15	68.0	85.0	0.720
SI28T/K	28	M27x2.0	35	24	51	41	66	103	136	14	37	46	47.60	15	86.0	107.0	0.820
SI30T/K	30	M30x2.0	37	25	51	41	70	110	145	15	40	50	50.80	17	88.0	114.0	1.100
SI30-1T/K	30	M27x2.0	37	25	51	41	70	110	145	15	40	50	50.80	17	88.0	114.0	1.100
SI35T/K	35	M36x2.0	43	28	56	50	81	125	165.5	17	46	58	57.10	16			1.600
SI40T/K	40	M42x2.0	49	33	60	55	91	142	187.5	19	53	65	66.60	17			2.400
SI50T/K	50	M48x2.0	60	45	65	65	117	160	218.5	23	65	75	82.50	12			5.000

Per filettatura sinistra aggiungere il suffisso "L" es. SI18T/K - For left-hand thread, please add suffix "L", e.g. SI18T/K.



## Teste a Snodo - Rod ends SA..T/K



Il corpo può essere con filettatura femmina Destra o Sinistra - Rod body with right or left-hand female thread.

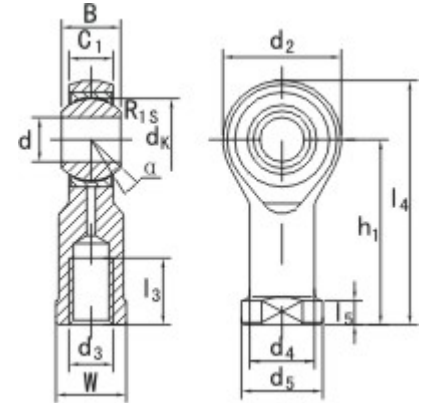
Esente da lubrificazione - It is made up of a maintenance-free radial spherical.

Superficie del corpo zincata - Surface of rod body zinc plated.

Part No.	Dimensioni - Dimensions mm										Load ratings kN			Peso Weight kg
	d	d <sub>3</sub> 6g	B	C <sub>1</sub>	L <sub>1</sub> min	d <sub>2</sub>	L <sub>7</sub> min	h	L <sub>2</sub>	d <sub>k</sub>	R <sub>1s</sub>	a ≈	dyn C	
SA5T/K	5	M5x0.8	8	6	19	18	33	42	11.11	0.3	13	5.70	6.00	0.013
SA6T/K	6	M6x1.0	9	6.75	21	20	36	46	12.70	0.3	13	7.20	7.65	0.020
SA8T/K	8	M8x1.25	12	9	25	24	42	54	15.875	0.3	14	11.6	12.9	0.038
SA10T/K	10	M10x1.5	14	10.5	28	28	28	62	19.05	0.3	13	14.5	18.0	0.055
SA12T/K	12	M12x1.75	16	12	32	32	54	70	22.225	0.3	13	17.0	24.0	0.085
SA14T/K	14	M14x2.0	19	13.5	36	36	18	60	25.40	0.3	16	24.0	31.0	0.14
SA16T/K	16	M16x2.0	21	15	37	42	21	66	28.575	0.3	15	28.5	39.0	0.21
SA18T/K	18	M18x1.5	23	16.5	41	44	22	72	31.75	0.3	15	42.5	47.5	0.28
SA20T/K	25	M20x1.5	25	18	45	50	25	78	34.925	0.3	14	42.5	57.0	0.38
SA22T/K	22	M22x1.5	28	20	48	54	27	84	38.10	0.3	15	57.0	68.0	0.48
SA25T/K	25	M24x2.0	31	22	55	60	30	94	42.85	0.3	15	68.0	85.0	0.64
SA28T/K	28	M27x2.0	35	24	62	66	33	103	47.60	0.3	15	86.0	107.0	0.80
SA30T/K	30	M30x2.0	37	25	66	70	35	110	50.80	0.3	17	88.0	114.0	1.10
SA35T/K	35	M36x2.0	43	28	85	81	41	140	57.10	0.3	16			1.64
SA40T/K	40	M42x2.0	49	33	90	91	46	150	66.60	0.3	17			2.30
SA50T/K	50	M48x2.0	60	45	105	117	59	185	82.50	0.3	12			4.80



## Teste a Snodo - Rod ends SSI..T/K



Come SI...T/K ma in acciaio Inox - Design features as series SI..T/K, but in stainless steel.

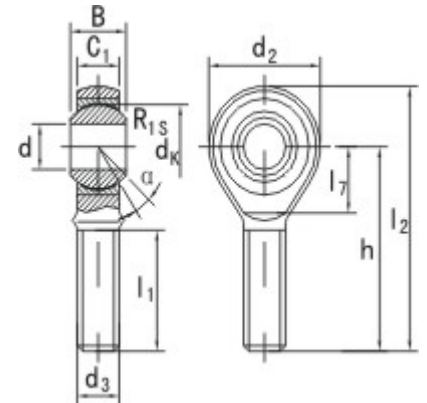
Part No.	Dimensioni – Dimensions mm											Load ratings kN			Peso Weight kg		
	d	d <sub>3</sub> 6H	B	C <sub>1</sub>	L <sub>3</sub> min	W	d <sub>2</sub>	h <sub>1</sub>	L <sub>4</sub>	L <sub>5</sub>	d <sub>4</sub>	d <sub>5</sub>	d <sub>k</sub>	a ≈		dyn C	stat C <sub>0</sub>
SSI5T/K	5	M5x0.8	8	6	10	9	18	27	36	4	8.5	11	11.11	13	5.70	6.00	0.016
SSI6T/K	6	M6x1.0	9	6.75	12	11	20	30	40	5	10	13	12.70	13	7.20	7.65	0.022
SSI8T/K	8	M8x1.25	12	9	16	14	24	36	48	5	12.5	16	15.875	14	11.60	12.9	0.047
SSI10T/K	10	M10x1.5	14	10.5	20	17	28	43	57	6.5	15	19	19.05	13	14.5	18.0	0.077
SSI10-1T/K	10	M10x1.25	14	10.5	20	17	28	43	57	6.5	15	19	19.05	13	14.5	18.0	0.077
SSI12T/K	12	M12x1.25	16	12	22	19	32	50	66	6.5	17.5	22	22.225	13	17.0	24.0	0.10
SSI12-1T/K	12	M12x1.75	16	12	22	19	32	50	66	6.5	17.5	22	22.225	13	17.0	24.0	0.10
SSI14T/K	14	M14x2.0	19	13.5	25	22	36	57	75	8	20	25	25.40	16	24.0	31.0	0.16
SSI14-1T/K	14	M14x1.5	19	13.5	25	22	36	57	75	8	20	25	25.40	16	24.0	31.0	0.16
SSI16T/K	16	M16x2.0	21	15	28	22	42	64	85	8	22	27	28.575	15	28.5	39.0	0.22
SSI16-1T/K	16	M16x1.5	21	15	28	22	42	64	85	8	22	27	28.575	15	28.5	39.0	0.22
SSI18T/K	18	M18x1.5	23	16.5	32	27	44	71	93	10	25	31	31.75	15	42.5	47.5	0.32
SSI20T/K	20	M20x1.5	25	18	33	30	50	77	102	10	27.5	34	34.925	14	42.5	57.0	0.42
SSI22T/K	22	M22x1.5	28	20	37	32	54	84	111	12	30	38	38.10	15	57.0	68.0	0.54
SSI25T/K	25	M24x2.0	31	22	42	36	60	94	124	12	33.5	42	42.85	15	68.0	85.0	0.72
SSI28T/K	28	M27x2.0	35	24	51	41	66	103	136	14	37	46	47.60	15	86.0	107.0	0.82
SSI30T/K	30	M30x2.0	37	25	51	41	70	110	145	15	40	50	50.80	17	88.0	114.0	1.10
SSI30-1T/K	30	M27x2.0	37	25	51	41	70	110	145	15	40	50	50.80	17	88.0	114.0	1.10

Per filettatura sinistra aggiungere il suffisso "L" es.SSIL18T/K - For left-hand thread, please add suffix "L", e.g.SSIL18T/K.





## Teste a Snodo - Rod ends SSA..T/K



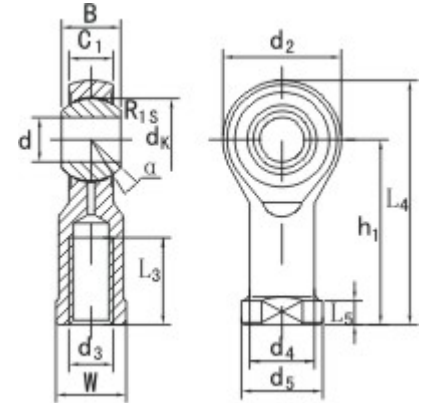
Come SI...T/K ma in acciaio Inox - Design features as series SI..T/K, but in stainless steel.

Part No.	Dimensioni – Dimensions mm										Load ratings kN			Peso Weight kg	
	d	d <sub>3</sub> 6g	B	C <sub>1</sub>	L <sub>1</sub> min	d <sub>2</sub>	L <sub>7</sub> min	h	L <sub>2</sub>	d <sub>k</sub>	R <sub>1s</sub>	a ≈	dyn C		stat C <sub>0</sub>
SSA5T/K	5	M5x0.8	8	6	19	18		33	42	11.11	0.3	13	5.70	6.00	0.013
SSA6T/K	6	M6x1.0	9	6.75	21	20		36	46	12.70	0.3	13	7.20	7.65	0.020
SSA8T/K	8	M8x1.25	12	9	25	24		42	54	15.875	0.3	14	11.6	12.9	0.038
SSA10T/K	10	M10x1.5	14	10.5	28	28		28	62	19.05	0.3	13	14.5	18.0	0.055
SSA12T/K	12	M12x1.75	16	12	32	32		54	70	22.225	0.3	13	17.0	24.0	0.085
SSA14T/K	14	M14x2.0	19	13.5	36	36	18	60	78	25.40	0.3	16	24.0	31.0	0.140
SSA16T/K	16	M16x2.0	21	15	37	42	21	66	87	28.575	0.3	15	28.5	39.0	0.210
SSA18T/K	18	M18x1.5	23	16.5	41	44	22	72	94	31.75	0.3	15	42.5	47.5	0.280
SSA20T/K	20	M20x1.5	25	18	45	50	25	78	103	34.925	0.3	14	42.5	57.0	0.380
SSA22T/K	22	M22x1.5	28	20	48	54	27	84	111	38.10	0.3	15	57.0	68.0	0.480
SSA25T/K	25	M24x2.0	31	22	55	60	30	94	124	42.85	0.3	15	68.0	85.0	0.640
SSA28T/K	28	M27x2.0	35	24	62	66	33	103	136	47.60	0.3	15	86.0	107.0	0.80
SSA30T/K	30	M30x2.0	37	25	66	70	35	110	145	50.80	0.3	17	88.0	114.0	1.10

Per filettatura sinistra agg. il suffisso "L" es. SSAL18T/K - For left-hand thread, please add suffix "L", e.g. SSAL18T/K.



## Teste a Snodo - Rod ends SI..BK



Il corpo può essere con filettatura femmina Destra o Sinistra-Rod body with right or left-hand female thread.

Anello esterno con riporto in PTFE-Outer race lined with PTFE composite material.

Superficie del corpo zincata-Surface of rod body zinc plated.

Part No.	Dimensioni - Dimensions mm											Load ratings kN		Peso Weight kg			
	d	d <sub>3</sub>	B	C <sub>1</sub>	L <sub>3</sub>	W	d <sub>2</sub>	h <sub>1</sub>	L <sub>4</sub>	L <sub>5</sub>	d <sub>4</sub>	d <sub>5</sub>	d <sub>k</sub>		a	dyn	stat
	7H				min									≈	C	C <sub>0</sub>	
SI5BK	5	M5x0.8	8	6	10	9	18	27	36	4	8.5	11	11.11	13	5.70	6.00	0.016
SI6BK	6	M6x1.0	9	6.75	12	11	20	30	40	5	10	13	12.70	13	7.20	7.65	0.022
SI8BK	8	M8x1.25	12	9	16	14	24	36	48	5	12.5	16	15.875	14	11.60	12.9	0.047
SI10BK	10	M10x1.5	14	10.5	20	17	28	43	57	6.5	15	19	19.05	13	14.5	18.0	0.077
SI10-1BK	10	M10x1.25	14	10.5	20	17	28	43	57	6.5	15	19	19.05	13	14.5	18.0	0.077
SI12BK	12	M12x1.75	16	12	22	19	32	50	66	6.5	17.5	22	22.225	13	17.0	24.0	0.10
SI12-1BK	12	M12x1.25	16	12	22	19	32	50	66	6.5	17.5	22	22.225	13	17.0	24.0	0.10
SI14BK	14	M14x2.0	19	13.5	25	22	36	57	75	8	20	25	25.40	16	24.0	31.0	0.16
SI14-1BK	14	M14x1.5	19	13.5	25	22	36	57	75	8	20	25	25.40	16	24.0	31.0	0.16
SI16BK	16	M16x2.0	21	15	28	22	42	64	85	8	22	27	28.575	15	28.5	39.0	0.22
SI16-1BK	16	M16x1.5	21	15	28	22	42	64	85	8	22	27	28.575	15	28.5	39.0	0.22
SI18BK	18	M18x1.5	23	16.5	32	27	44	71	93	10	25	31	31.75	15	42.5	47.5	0.32

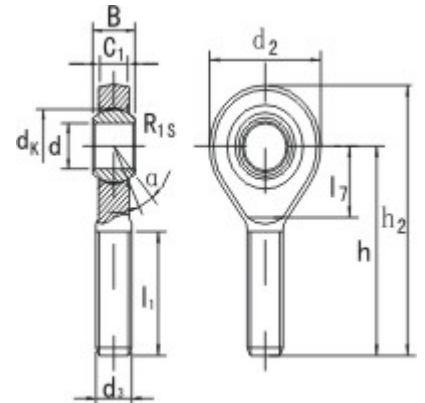


Part No.	Dimensioni - Dimensions mm															Load ratings kN			Peso Weight kg
	d	d <sub>3</sub>	B	C <sub>1</sub>	L <sub>3</sub>	W	d <sub>2</sub>	h <sub>1</sub>	L <sub>4</sub>	L <sub>5</sub>	d <sub>4</sub>	d <sub>5</sub>	d <sub>k</sub>	a	dyn	stat			
		7H			min									≈	C	C <sub>0</sub>			
SI20BK	20	M20x1.5	25	18	33	30	50	77	102	10	27.5	34	34.925	14	42.5	57.0	0.42		
SI22BK	22	M22x1.5	28	20	37	32	54	84	111	12	30	38	38.10	15	57.0	68.0	0.54		
SI25BK	25	M24x2.0	31	22	42	36	60	94	124	12	33.5	42	42.85	15	68.0	85.0	0.72		
SI28BK	28	M27x2.0	35	24	51	41	66	103	136	14	37	46	47.60	15	86.0	107.0	0.82		
SI30BK	30	M30x2.0	37	25	51	41	70	110	145	15	40	50	50.80	17	88.0	114.0	1.10		

Per filettatura Sinistra aggiungere suffisso "L" es. SIL....BK-For left-hand thread, please add suffix "L", e.g. SIL... BK



## Teste a Snodo - Rod ends SA..BK



- Il corpo può essere con filettatura femmina Destra o Sinistra-Rod body with right or left-hand female thread.

Anello esterno con riporto in PTFE-Outer race lined with PTFE composite material.

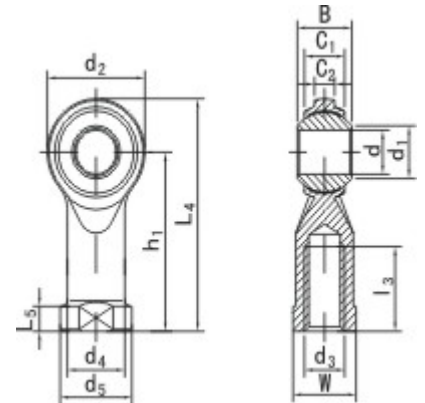
Superficie del corpo zincata-Surface of rod body zinc plated.

Part No.	Dimensioni – Dimensions mm										Load ratings kN			Peso Weight kg	
	d	d <sub>3</sub> 6g	B	C <sub>1</sub>	L <sub>1</sub> min	d <sub>2</sub>	L <sub>7</sub> min	h	L <sub>2</sub>	d <sub>k</sub>	R <sub>1s</sub>	a ≈	dyn C		stat C <sub>0</sub>
SA5BK	5	M5x0.8	8	6	19	18		33	42	11.11	0.3	13	5.70	6.00	0.013
SA6BK	6	M6x1.0	9	6.75	21	20		36	46	12.70	0.3	13	7.20	7.65	0.020
SA8BK	8	M8x1.25	12	9	25	24		42	54	15.875	0.3	14	11.6	12.9	0.038
SA10BK	10	M10x1.5	14	10.5	28	28		48	62	19.05	0.3	13	14.5	18.0	0.055
SA12BK	12	M12x1.75	16	12	32	32		54	70	22.225	0.3	13	17.0	24.0	0.085
SA14BK	14	M14x2.0	19	13.5	36	36	18	60	78	25.40	0.3	16	24.0	31.0	0.140
SA16BK	16	M16x2.0	21	15	37	42	21	66	87	28.575	0.3	15	28.5	39.0	0.210
SA18BK	18	M18x1.5	23	16.5	41	44	23	72	94	31.75	0.3	15	42.5	47.5	0.280
SA20BK	25	M20x1.5	25	18	45	50	25	78	103	34.925	0.3	14	42.5	57.0	0.380
SA22BK	22	M22x1.5	28	20	48	54	27	84	111	38.10	0.3	15	57.0	68.0	0.480
SA25BK	25	M24x2.0	31	22	55	60	30	94	124	42.85	0.3	15	68.0	85.0	0.640
SA28BK	28	M27x2.0	35	24	62	66	33	103	136	47.60	0.3	15	86.0	107.0	0.80
SA30BK	30	M30x2.0	37	25	66	70	35	110	145	50.80	0.3	17	88.0	114.0	1.10

Per filettatura Sinistra aggiungere suffisso "L" es. SAL....BK-For left-hand thread, please add suffix "L", e.g. SAL... BK



## Teste a Snodo - Rod ends SI..PK



- Il corpo può essere con filettatura femmina Destra o Sinistra-Rod body with right or left-hand female thread.

Anello esterno con riporto in PTFE-Outer race lined with PTFE composite material.

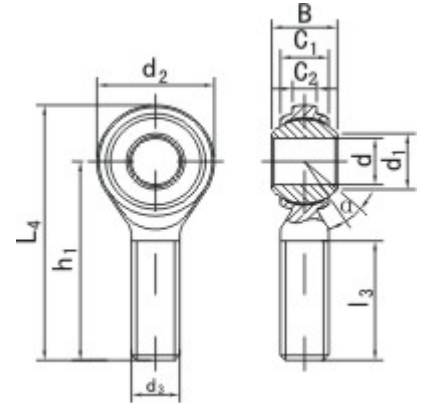
Superficie del corpo zincata-Surface of rod body zinc plated.

Part No.	Dimensioni – Dimensions mm											Load ratings kN		Peso Weight kg		
	d	d <sub>3</sub> 7H	B	C <sub>1</sub>	L <sub>3</sub> min	W	d <sub>2</sub>	h <sub>1</sub>	L <sub>4</sub>	L <sub>5</sub>	d <sub>4</sub>	d <sub>5</sub>	a ≈		dyn C	stat C <sub>0</sub>
SI5PK	5	M5x0.8	8	6	10	9	19	27	36.5	4	9	11	12	5.70	6.00	0.018
SI6PK	6	M6x1.0	9	6.7	12	11	21	30	40.5	5	10	13	11	7.20	7.65	0.026
SI8PK	8	M8x1.25	12	9	16	14	25	36	48.5	5	12.5	16	12	11.6	12.9	0.047
SI10PK	10	M10x1.5	14	11	20	17	29	43	57.5	6.5	15	19	12	14.5	18.0	0.077
SI10-1PK	10	M10x1.25	14	11	20	17	29	43	57.5	6.5	15	19	12	14.5	18.0	0.077
SI12PK	12	M12x1.75	16	12	22	19	33	50	66.5	6.5	17.5	22	13	17.0	24.0	0.100
SI12-1PK	12	M12x1.25	16	12	22	19	33	50	66.5	6.5	17.5	22	13	17.0	24.0	0.100
SI14PK	14	M14x2.0	19	14	25	22	37	57	75.5	8	20	25	14	24.0	31.0	0.160
SI16PK	16	M16x2.0	21	15	28	22	43	64	85.5	8	22	27	14	28.5	39.0	0.220
SI16-1PK	16	M16x1.5	21	15	28	22	43	64	85.5	8	22	27	14	28.5	39.0	0.220
SI18PK	18	M18x1.5	23	17	32	27	47	71	94.5	10	25	31	14	42.5	47.5	0.320
SI20PK	20	M20x1.5	25	18	33	30	51	77	102.5	10	27.5	34	14	42.5	57.0	0.420
SI22PK	22	M22x1.5	28	20	37	32	55	84	111.5	12	30	38	15	57.0	68.0	0.540
SI25PK	25	M24x2.0	31	22	42	36	61	94	124.5	12	33.5	42	15	68.0	85.0	0.720

Per filettatura Sinistra aggiungere suffisso "L" es. SIL....PK-For left-hand thread, please add suffix "L", e.g. SIL... PK



## Teste a Snodo - Rod ends SA..PK



- Il corpo può essere con filettatura femmina Destra o Sinistra-Rod body with right or left-hand female thread.

Anello esterno con riporto in PTFE-Outer race lined with PTFE composite material.

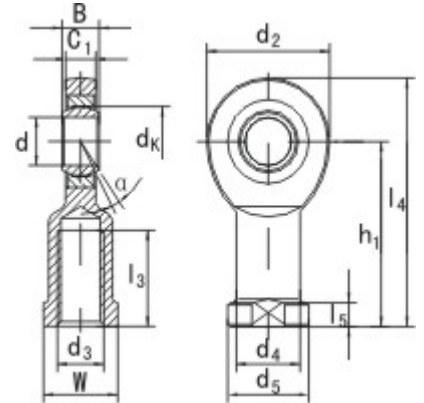
Superficie del corpo zincata-Surface of rod body zinc plated.

Part No.	Dimensioni – Dimensions mm								Load ratings kN			Peso Weight kg
	d	d <sub>3</sub>	B	C <sub>1</sub>	d <sub>2</sub>	h <sub>1</sub>	L <sub>4</sub>	L <sub>3</sub>	a	dyn	stat	
	6g								≈	C	C <sub>0</sub>	
SA5PK	5	M5x0.8	8	6	19	33	42.5	20	12	5.70	6.00	0.014
SA6PK	6	M6x1.0	9	6.7	21	36	46.5	22	11	7.20	7.65	0.020
SA8PK	8	M8x1.25	12	9	25	42	54.5	25	12	11.6	12.9	0.038
SA10PK	10	M10x1.5	14	11	29	48	62.5	29	12	14.5	18.0	0.055
SA12PK	12	M12x1.75	16	12	33	54	70.5	33	13	17.0	24.0	0.085
SA14PK	14	M14x2.0	19	13	37	60	78.5	36	14	24.0	31.0	0.140
SA16PK	16	M16x2.0	21	15	43	66	87.5	40	14	28.5	39.0	0.210
SA18PK	18	M18x1.5	23	17	47	72	95.5	44	14	42.5	47.5	0.280
SA20PK	20	M20x1.5	25	18	51	78	103.5	47	14	42.5	57.0	0.380
SA22PK	22	M22x1.5	28	20	55	84	111.5	50	15	57.0	68.0	0.480
SA25PK	25	M24x2.0	31	22	61	94	124.5	57	15	68.0	85.0	0.640

Per filettatura Sinistra aggiungere suffisso "L" es. SAL....PK-For left-hand thread, please add suffix "L", e.g. SAL... PK



## Teste a Snodo - Rod ends GIR..UK,GIR..UK 2RS



- Il corpo può essere con filettatura femmina Destra o Sinistra-Rod body with right or left-hand female thread.

Esente da lubrificazione come GE..UK o GE..UK2RS con il corpo-It is made up of a maintenance-free radial spherical plain bearing GE..UK or GE..UK2RS and rod body.

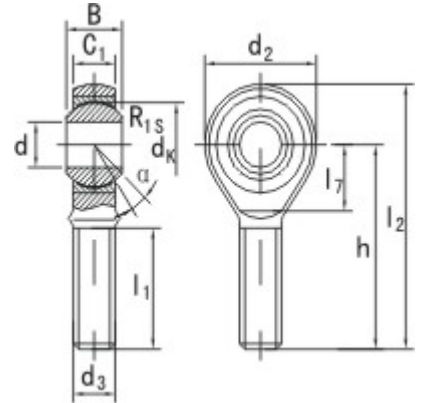
Superficie del corpo zincata-Surface of rod body zinc plated.

Part No.	Dimensioni - Dimensions mm													Load ratings kN		Peso Weight kg	
	d	d <sub>3</sub>	B	C <sub>1</sub>	L <sub>3</sub>	W	d <sub>2</sub>	h <sub>1</sub>	L <sub>4</sub>	L <sub>5</sub>	d <sub>4</sub>	d <sub>5</sub>	d <sub>k</sub>	a	dyn		stat
	6H				min									≈	C	C <sub>0</sub>	
GIR6UK	6	M6x1.0	6	4.4	11	11	21	30	40.5	5	10	13	10	13	3.60	8.15	0.021
GIR8UK	8	M8x1.25	8	6	15	14	24	36	48	5	12.5	16	13	15	5.85	12.9	0.039
GIR10UK	10	M10x1.5	9	7	20	17	29	43	57.5	6.5	15	19	16	12	8.65	17.6	0.061
GIR12UK	12	M12x1.75	10	8	23	19	34	50	67	6.5	17.5	22	18	11	11.4	24.5	0.096
GIR15UK	15	M14x2.0	12	10	30	22	40	61	81	8	21	26	22	8	17.6	36.0	0.18
GIR17UK(2RS)	17	M16x2.0	14	11	34	27	46	67	90	10	24	30	25	10	22.4	45.0	0.22
GIR20UK(2RS)	20	M20x1.5	16	13	40	32	53	77	103.5	10	27.5	35	29	9	31.5	60.0	0.35
GIR25UK(2RS)	25	M24x2.0	20	17	48	36	64	94	126	12	33.5	42	35.5	7	51.0	83.0	0.64
GIR30UK(2RS)	30	M30x2.0	22	19	56	41	73	110	146.5	15	40	50	40.7	6	66.5	110	0.93
GIR35UK2RS	35	M36x3.0	25	21	60	50	82	125	166	15	47	58	47	6	112	146	1.30
GIR40UK2RS	40	M39x3.0	28	23	65	55	92	142	188	18	52	65	53	7	140	180	2.00
GIR45UK2RS	45	M42x3.0	32	27	65	60	102	145	196	20	58	70	60	7	180	240	2.50
GIR50UK2RS	50	M45x3.0	35	30	68	65	112	160	216	20	62	75	66	6	220	290	3.50
GIR60UK2RS	60	M52x3.0	44	38	70	75	135	175	242.5	20	70	88	80	6	345	450	5.50
GIR70UK2RS	70	M56x4.0	49	42	80	85	160	200	280	20	80	98	92	6	440	610	8.60
GIR80UK2RS	80	M64x4.0	55	47	85	100	180	230	320	25	95	110	105	6	570	750	12.0

Per filettatura Sinistra aggiungere suffisso "L" es. GIRL....UK-For left-hand thread, please add suffix "L", e.g. GIRL... UK



## Teste a Snodo - Rod ends GAR..UK, GAR..UK 2RS



- Il corpo può essere con filettatura femmina Destra o Sinistra-Rod body with right or left-hand female thread.

Esente da lubrificazione come GE..UK o GE..UK2RS con il corpo-It is made up of a maintenance-free radial spherical plain bearing GE..UK or GE..UK2RS and rod body.

Superficie del corpo zincata-Surface of rod body zinc plated.

Part No.	Dimensioni – Dimensions mm											Laod ratings kN			Peso Weight kg
	d	d <sub>3</sub>	B	C <sub>1</sub>	L <sub>1</sub>	d <sub>2</sub>	L <sub>7</sub>	h	L <sub>2</sub>	d <sub>k</sub>	R <sub>1s</sub>	a	dyn	stat	
	6g				min							≈	C	C <sub>0</sub>	
<b>GAR6UK</b>	6	M6x1.0	6	4.4	18	21	12	36	46.5	10	0.3	13	3.60	8.15	0.017
<b>GAR8UK</b>	8	M8x1.25	8	6	22	24	14	42	54	13	0.3	15	5.85	12.9	0.029
<b>GAR10UK</b>	10	M10x1.5	9	7	26	29	15	48	62.5	16	0.3	12	8.65	17.6	0.051
<b>GAR12UK</b>	12	M12x1.75	10	8	28	34	18	54	71	18	0.3	11	11.4	24.5	0.086
<b>GAR15UK</b>	15	M14x2.0	12	10	34	40	20	64	83	22	0.3	8	17.6	36.0	0.14
<b>GAR17UK(2RS)</b>	17	M16x2.0	14	11	36	46	23	69	92	25	0.3	10	22.4	45.0	0.19
<b>GAR20UK(2RS)</b>	20	M20x1.5	16	13	43	53	27	78	104.5	29	0.6	9	31.5	60.0	0.31
<b>GAR25UK(2RS)</b>	25	M24x2.0	20	17	53	64	32	94	126	35.5	0.6	7	51.0	83.0	0.56
<b>GAR30UK(2RS)</b>	30	M30x2.0	22	19	65	73	37	110	146.5	40.7	0.6	6	66.5	110	0.89
<b>GAR35UK2RS</b>	35	M36x3.0	25	21	82	82	42	140	181	47	0.6	6	112	146	1.40
<b>GAR40UK2RS</b>	40	M39x3.0	28	23	86	92	48	150	196	53	0.6	7	140	180	1.80



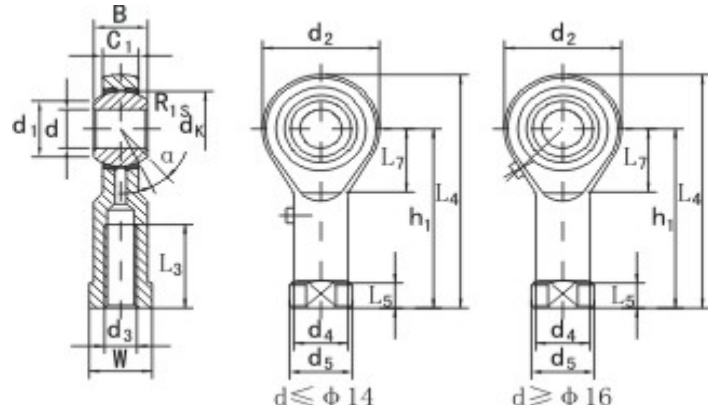


Part No.	Dimensioni – Dimensions mm											Laod ratings kN		Peso Weight kg	
	d	d <sub>3</sub> 6g	B	C <sub>1</sub>	L <sub>1</sub> min	d <sub>2</sub>	L <sub>7</sub>	h	L <sub>2</sub>	d <sub>k</sub>	R <sub>1s</sub>	a ≈	dyn C		stat C <sub>0</sub>
<b>GAR45UK2RS</b>	45	M42x3.0	32	27	94	102	52	163	214	60	0.6	7	180	240	2.60
<b>GAR50UK2RS</b>	50	M45x3.0	35	30	107	112	60	185	241	66	0.6	6	220	290	3.40
<b>GAR60UK2RS</b>	60	M52x3.0	44	38	115	135	75	210	277.5	80	1.0	6	345	450	5.90
<b>GAR70UK2RS</b>	70	M56x4.0	49	42	125	160	87	235	315	92	1.0	6	440	610	8.20
<b>GAR80UK2RS</b>	80	M64x4.0	55	47	140	180	100	270	360	105	1.0	6	570	750	12.0

Per filettatura Sinistra aggiungere suffisso “L” es. GARL....UK-For left-hand thread,please add surffix "L",e.g.GARL... UK



## Teste a Snodo - Rod ends RF...



- Il corpo può essere con filettatura femmina Destra o Sinistra-Rod body with right or left-hand female thread.

Anello esterno in Bronzo-Outer race lined with bronze liner.

Superficie del corpo zincata con foro di lubrificazione o ingrassatore-Surface of rod body zinc plated, rod body with a lubricating hole or grease nipple.

Part No.	Dimensioni – Dimensions mm													Load ratings kN		Peso Weight kg		
	d	d <sub>3</sub> 6H	B	C <sub>1</sub>	L <sub>3</sub> min	W	d <sub>2</sub>	d <sub>1</sub>	h <sub>1</sub>	L <sub>4</sub>	L <sub>5</sub>	d <sub>4</sub>	d <sub>5</sub>	d <sub>k</sub>	a ≈		dyn C	stat C <sub>0</sub>
RF5	5	M5x0.8	8	6	10	9	16	7.7	27	35	4	8.5	11	11.11	13	3.25	5.70	0.016
RF6	6	M6x1.0	9	6.75	12	11	18	8.96	30	39	5	10.0	13	12.70	13	4.30	7.20	0.022
RF8	8	M8x1.25	12	9	16	14	22	10.4	36	47	5	12.5	16	15.875	14	7.20	11.6	0.047
RF10	10	M10x1.5	14	10.5	20	17	26	12.9	43	56	6.5	15.0	19	19.05	13	10.0	14.5	0.077
RF10-1	10	M10x1.25	14	10.5	20	17	26	12.9	43	56	6.5	15.0	19	19.05	13	10.0	14.5	0.077
RF12	12	M12x1.75	16	12	22	19	30	15.4	50	65	6.5	17.5	22	22.225	13	13.4	17.0	0.10
RF12-1	12	M12x1.25	16	12	22	19	30	15.4	50	65	6.5	17.5	22	22.225	13	13.4	17.0	0.10
RF14	14	M14x2.0	19	13.5	25	22	34	16.9	57	74	8	20.0	25	25.40	16	17.0	24.0	0.16
RF14-1	14	M14x1.5	19	13.5	25	22	34	16.9	57	74	8	20.0	25	25.40	16	17.0	24.0	0.16
RF16	16	M16x2.0	21	15	28	22	40	19.4	64	84	8	22.0	27	28.575	15	21.6	28.5	0.22
RF16-1	16	M16x1.5	21	15	28	22	40	19.4	64	84	8	22.0	27	28.575	15	21.6	28.5	0.22
RF18	18	M18x1.5	23	16.5	32	27	44	21.9	71	93	10	25.0	31	31.75	15	26.0	42.5	0.32

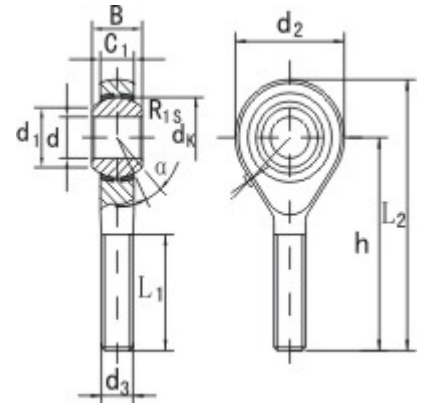


Part No.	Dimensioni – Dimensions mm														Load ratings kN			Peso Weight kg
	d	d <sub>3</sub> 6H	B	C <sub>1</sub>	L <sub>3</sub> min	W	d <sub>2</sub>	d <sub>1</sub>	h <sub>1</sub>	L <sub>4</sub>	L <sub>5</sub>	d <sub>4</sub>	d <sub>5</sub>	d <sub>k</sub>	a ≈	dyn C	stat C <sub>0</sub>	
<b>RF20</b>	20	M20x1.5	25	18	33	30	50	24.4	77	102	10	27.5	34	34.925	14	21.5	42.5	0.42
<b>RF22</b>	22	M22x1.5	28	20	37	32	54	25.8	84	111	12	30.0	38	38.10	15	38.0	57.0	0.54
<b>RF25</b>	25	M24x2.0	31	22	42	36	60	29.6	94	124	12	33.5	42	42.85	15	47.5	68.0	0.73
<b>RF28</b>	28	M27x2.0	35	24	48	41	66	32.3	103	136	14	37.5	46	47.60	15	58.0	75.0	0.98
<b>RF30</b>	30	M30x2.0	37	25	51	41	70	34.8	110	145	15	40.0	50	50.80	17	64.0	88.0	1.10
<b>RF30-1</b>	30	M27x2.0	37	25	51	41	70	34.8	110	145	15	40.0	50	50.80	17	64.0	88.0	1.10

Per filettatura Sinistra aggiungere suffisso "L" es. RFL.... - For left-hand thread, please add suffix "L", e.g. RFL...



## Teste a Snodo - Rod ends RM....



- Il corpo può essere con filettatura femmina Destra o Sinistra-Rod body with right or left-hand female thread.

Anello esterno in Bronzo-Outer race lined with bronze liner.

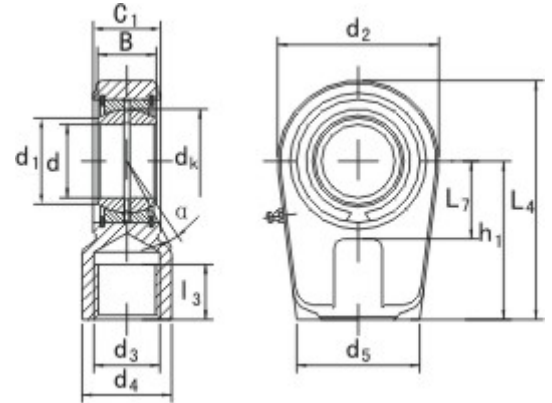
Superficie del corpo zincata con foro di lubrificazione o ingrassatore-Surface of rod body zinc plated, rod body with a lubricating hole or grease nipple

Part No.	Dimensioni – Dimensions mm											Load ratings kN		Peso Weight kg	
	d	d <sub>3</sub>	B	C <sub>1</sub>	L <sub>1</sub>	d <sub>1</sub>	d <sub>2</sub>	h	L <sub>2</sub>	d <sub>k</sub>	R <sub>1s</sub>	a	dyn		stat
		6g			min							≈	C	C <sub>0</sub>	
RM5	5	M5x0.8	8	6	20	7.7	16	33	41	11.11	0.3	13	3.25	5.70	0.013
RM6	6	M6x1.0	9	6.75	22	8.96	18	36	45	12.70	0.3	13	4.30	7.20	0.020
RM8	8	M8x1.25	12	9	25	10.4	22	42	53	15.875	0.3	14	7.20	11.6	0.030
RM10	10	M10x1.5	14	10.5	29	12.9	26	48	61	19.05	0.3	13	10.0	14.5	0.055
RM12	12	M12x1.75	16	12	33	15.4	30	54	69	22.225	0.3	13	13.4	17.0	0.085
RM14	14	M14x2.0	19	13.5	36	16.9	34	60	77	25.40	0.3	16	17.0	24.0	0.14
RM16	16	M16x2.0	21	15	40	19.4	40	66	86	28.575	0.3	15	21.6	28.5	0.21
RM18	18	M18x1.5	23	16.5	44	21.9	44	72	94	31.75	0.3	15	26.0	42.5	0.28
RM20	20	M20x1.5	25	18	47	24.4	50	78	103	34.925	0.3	14	31.5	52.5	0.38
RM22	22	M22x1.5	28	20	51	25.8	54	84	111	38.10	0.3	15	38.0	57.0	0.48
RM25	25	M24x2.0	31	22	57	29.6	60	94	124	42.85	0.3	15	47.5	68.0	0.64
RM28	28	M27x2.0	35	24	62	31.3	66	103	136	47.60	0.3	15	58.0	75.5	0.96
RM30	30	M30x2.0	37	25	66	34.8	70	110	145	50.80	0.3	17	64.0	88.0	1.10

Per filettatura Sinistra aggiungere suffisso "L" es. RML.... - For left-hand thread, please add suffix "L", e.g. RML...



## Teste a Snodo per Idraulica Rod ends for hydraulic components GIHR..DO



- Il corpo può essere con filettatura femmina Destra o Sinistra-Rod body with right or left-hand female thread.

Snodo come GE..ES o GE..ES 2RS con il corpo-It is made up of a radial spherical plain bearing GE..ES or GE..ES 2RS and rod end housing.

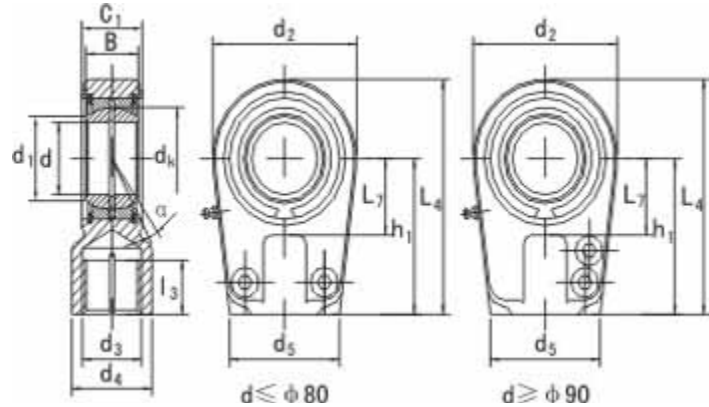
Corpo con foro di lubrificazione e ingrassatore-Rod end housing with a lubricating hole or grease nipple

Part No.	Dimensioni – Dimensions mm											Load ratings kN		Peso Weight kg			
	d	d <sub>3</sub> 6H	d <sub>4</sub>	L <sub>3</sub> min	B	C <sub>1</sub>	d <sub>2</sub>	L <sub>7</sub> min	h <sub>1</sub>	L <sub>4</sub>	d <sub>5</sub>	d <sub>1</sub>	d <sub>k</sub>		a ≈	dyn C	stat C <sub>0</sub>
GIHR20DO	20	M16x1.5	25	17	16	19	56	25	50	80	46	24.2	29	9	30.0	72.0	0.43
GIHR25DO	25	M16x1.5	25	17	20	23	56	28	50	80	46	29.3	35.5	7	48.0	72.0	0.48
GIHR30DO	30	M22x1.5	32	23	22	28	64	30	60	94	50	34.2	40.7	6	62.0	106	0.74
GIHR35DO	35	M28x1.5	40	29	25	30	78	38	70	112	66	39.8	47	6	80.0	153	1.20
GIHR40DO	40	M35x1.5	49	36	28	35	94	45	85	135	76	45.0	53	7	100	250	2.00
GIHR50DO	50	M45x1.5	61	46	35	40	116	55	105	168	90	55.9	66	6	156	365	3.80
GIHR60DO	60	M58x1.5	75	59	44	50	130	65	130	200	120	66.8	80	6	245	400	5.40
GIHR70DO	70	M65x1.5	86	66	49	55	154	75	150	237	130	77.9	92	6	315	540	8.50
GIHR80DO	80	M80x2.0	105	81	55	60	176	80	170	265	160	89.4	105	6	400	670	12.0
GIHR90DO	90	M100x2.0	124	101	60	65	206	90	210	323	180	98.1	115	5	490	980	21.5
GIHR100DO	100	M110x2.0	138	111	70	70	230	105	235	360	200	109.5	130	7	610	1120	27.5
GIHR110DO	110	M120x3.0	152	125	70	80	265	115	265	407.5	220	121.2	140	6	655	1700	40.5
GIHR120DO	120	M130x3.0	172	135	85	90	340	140	310	490	257	135.5	160	6	950	2900	76.0

Per filettatura Sinistra aggiungere suffisso "L" es. GIHRL....DO –  
For left-hand thread, please add suffix "L", e.g. GIHRL...DO



## Teste a Snodo per Idraulica Rod ends for hydraulic components GIHR-K..DO



- Il corpo può essere con filettatura femmina Destra o Sinistra-Rod body with right or left-hand female thread.

Snodo come GE..ES o GE..ES 2RS con il corpo-It is made up of a radinl spherical plain bearing GE..ES or GE..ES 2RS and rod end housing.

Con viti di bloccaggio-With locking slot and nut.

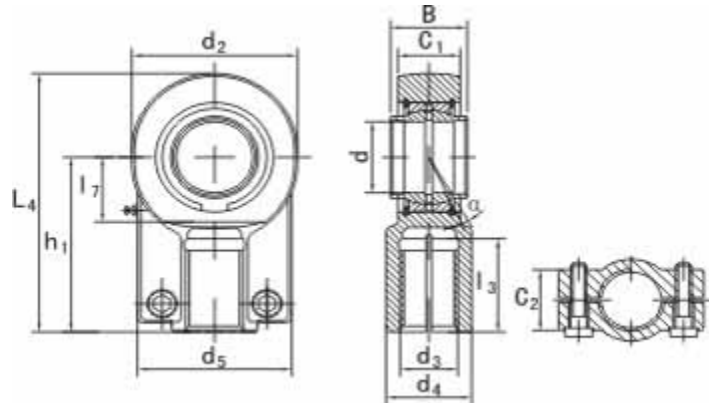
Corpo con foro di lubrificazione e ingrassatore-Rod end housing with a lubricating hole or grease nipple.

Part No.	Dimensioni – Dimensions mm											Load ratings kN		Peso Weight kg			
	d	d <sub>3</sub> 6H	d <sub>4</sub>	L <sub>3</sub> min	B	C <sub>1</sub>	d <sub>2</sub>	L <sub>7</sub> min	h <sub>1</sub>	L <sub>4</sub>	d <sub>5</sub>	d <sub>1</sub>	d <sub>k</sub>		a ≈	dyn C	stat C <sub>0</sub>
GIHR-K20DO	20	M16x1.5	25	17	16	19	56	25	50	80	46	24.2	29	9	30.0	72.0	0.43
GIHR-K25DO	25	M16x1.5	25	17	20	23	56	28	50	80	46	29.3	35.5	7	48.0	72.0	0.48
GIHR-K30DO	30	M22x1.5	32	23	22	28	64	30	60	94	50	34.2	40.7	6	62.0	106	0.74
GIHR-K35DO	35	M28x1.5	40	29	25	30	78	38	70	112	66	39.8	47	6	80.0	153	1.20
GIHR-K40DO	40	M35x1.5	49	36	28	35	94	45	85	135	76	45.0	53	7	100	250	2.00
GIHR-K50DO	50	M45x1.5	61	46	35	40	116	55	105	168	90	55.9	66	6	156	365	3.80
GIHR-K60DO	60	M58x1.5	75	59	44	50	130	65	130	200	120	66.8	80	6	245	400	5.40
GIHR-K70DO	70	M65x1.5	86	66	49	55	154	75	150	237	130	77.9	92	6	315	540	8.50
GIHR-K80DO	80	M80x2.0	105	81	55	60	176	80	170	265	160	89.4	105	6	400	670	12.0
GIHR-K90DO	90	M100x2.0	124	101	60	65	206	90	210	323	180	98.1	115	5	490	980	21.5
GIHR-K100DO	100	M110x2.0	138	111	70	70	230	105	235	360	200	109.5	130	7	610	1120	27.5
GIHR-K110DO	110	M120x3.0	152	125	70	80	265	115	265	407.5	220	121.2	140	6	655	1700	40.5
GIHR-K120DO	120	M130x3.0	172	135	85	90	340	140	310	490	257	135.5	160	6	950	2900	76.0

Per filettatura Sinistra aggiungere suffisso "L" es. GIHRL-K....DO –  
For left-hand thread, please add surffix "L", e.g. GIHRL-K....DO



## Teste a Snodo per Idraulica Rod ends for hydraulic components GIHN-K..LO



- Il corpo può essere con filettatura femmina Destra o Sinistra-Rod body with right or left-hand female thread.

Snodo come GE..LO con il corpo-It is made up of a radinl spherical plain bearing GE..LO and rod end housing.

Con viti di bloccaggio-With locking slot and nut.

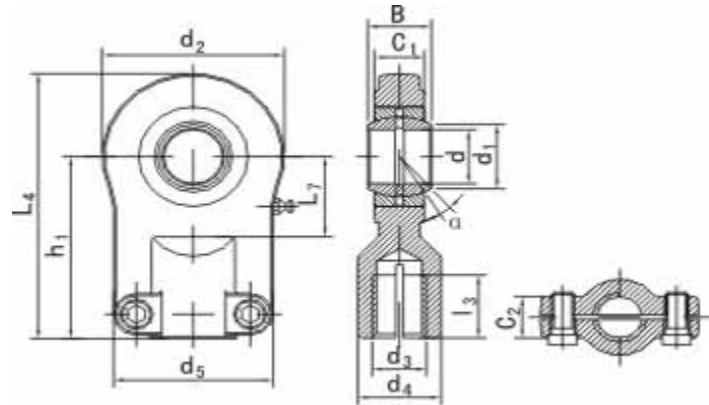
Corpo con foro di lubrificazione e ingrassatore-Rod end housing with a lubricating hole or grease nipple.

Part No.	Dimensioni – Dimensions mm												Load ratings kN		Peso Weight kg
	d	d <sub>3</sub> 6H	d <sub>4</sub>	L <sub>3</sub> min	B	C <sub>1</sub>	d <sub>2</sub>	L <sub>7</sub> min	h <sub>1</sub>	L <sub>4</sub>	d <sub>5</sub>	C <sub>2</sub>	dyn C	stat C <sub>0</sub>	
GIHN-K12LO	12	M12x1.25	16.5	17	12	11	32	14	38	54	32	11	10.8	24.5	0.10
GIHN-K16LO	16	M14x1.5	21	19	16	14	40	18	44	64	40	14	17.6	36.5	0.20
GIHN-K20LO	20	M16x1.5	25	23	20	17	47	22	52	77	47	17	30.0	48.0	0.40
GIHN-K25LO	25	M20x1.5	30	29	25	22	58	27	65	96	54	19	48.0	78.0	0.66
GIHN-K32LO	32	M27x2.0	38	37	32	28	71	32	80	118.5	66	22	67.0	114	1.20
GIHN-K40LO	40	M33x2.0	47	46	40	33	90	41	97	146	80	26	100	204	2.10
GIHN-K50LO	50	M42x2.0	58	57	50	41	109	50	120	179.5	96	32	156	310	4.40
GIHN-K63LO	63	M48x2.0	70	64	63	53	136	62	140	213	114	38	255	430	7.60
GIHN-K70LO	70	M56x2.0	80	76	70	57	155	70	160	245	135	42	315	540	9.50
GIHN-K80LO	80	M64x3.0	90	86	80	66	168	78	180	270	148	48	400	695	14.5
GIHN-K90LO	90	M72x3.0	100	91	90	72	185	85	195	296	160	52	490	750	17.0
GIHN-K100LO	100	M80x3.0	110	96	100	84	210	98	210	322	178	62	610	1060	28.0
GIHN-K110LO	110	M90x3.0	125	106	110	88	235	105	235	364	190	62	655	1200	32.0
GIHN-K125LO	125	M100x3.0	135	113	125	102	260	120	260	405	200	72	950	1430	43.0

Per filettatura Sinistra aggiungere suffisso "L" es. GIHNL-K...LO –  
For left-hand thread, please add surffix "L", e.g. GIHNL-K...LO



## Teste a Snodo per Idraulica Rod ends for hydraulic components GIHO-K..DO



- Il corpo può essere con filettatura femmina Destra o Sinistra-Rod body with right or left-hand female thread.

Snodo come GE..ES o GE..ES 2RS con il corpo-It is made up of a radinl spherical plain bearing GE..ES or GE..ES 2RS and rod end housing.

Con viti di bloccaggio-With locking slot and nut.

Corpo con foro di lubrificazione e ingrassatore-Rod end housing with a lubricating hole or grease nipple.

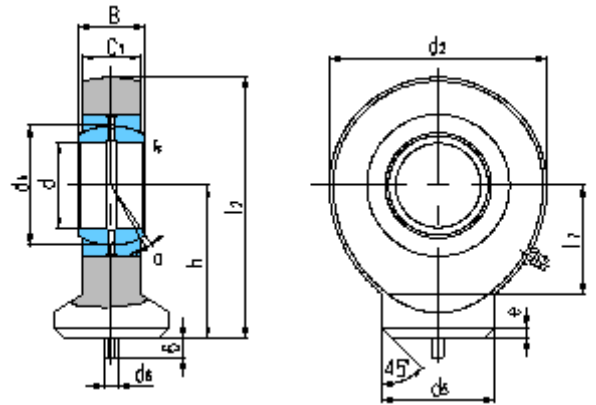
Part No.	Dimensioni – Dimensions mm												Load ratings kN		Peso Weight kg		
	d	d <sub>3</sub>	d <sub>4</sub>	L <sub>3</sub>	B	C <sub>1</sub>	d <sub>2</sub>	L <sub>7</sub>	h <sub>1</sub>	L <sub>4</sub>	d <sub>5</sub>	d <sub>1</sub>	C <sub>2</sub>	a		dyn C	stat C <sub>0</sub>
	6H		min				min										
GIHO-K12DO	12	M10x1.25	17	15	10	8	35	16	42	59.5	40	15.0	13	11	10.8	17.0	0.12
GIHO-K16DO	16	M12x1.25	21	17	14	11	45	20	48	70.5	45	20.7	13	10	21.1	28.5	0.22
GIHO-K20DO	20	M14x1.5	25	19	16	13	55	25	58	85.5	55	24.2	17	9	30.0	42.5	0.43
GIHO-K25DO	25	M16x1.5	30	23	20	17	65	30	68	100.5	62	29.3	17	7	48.0	67.0	0.67
GIHO-K30DO	30	M20x1.5	36	29	22	19	80	35	85	125	77	34.2	19	6	62.0	108	1.25
GIHO-K40DO	40	M27x2.0	45	37	28	23	100	45	105	155	90	45.0	23	7	100	156	2.16
GIHO-K50DO	50	M33x2.0	55	46	35	30	120	58	130	190	105	55.9	30	6	156	245	3.90
GIHO-K60DO	60	M42x2.0	68	57	44	38	160	68	150	230	134	66.8	38	6	245	380	7.15
GIHO-K80DO	80	M48x2.0	90	64	55	47	205	82	185	287.5	156	89.4	47	6	400	585	15.0
GIHO-K100DO	100	M64x3.0	110	86	70	55	240	116	240	360	190	109.5	55	7	610	865	27.3

Per filettatura Sinistra aggiungere suffisso "L" es. GIHOL-K....DO –  
For left-hand thread, please add surffix "L", e.g. GIHOL-K....DO





## Teste a Snodo per Idraulica Rod ends for hydraulic components GK..DO



Snodo come GE..ES o GE..ES 2RS con il corpo-It is made up of a radinl spherical plain bearing GE..ES or GE..ES 2RS and rod end housing.

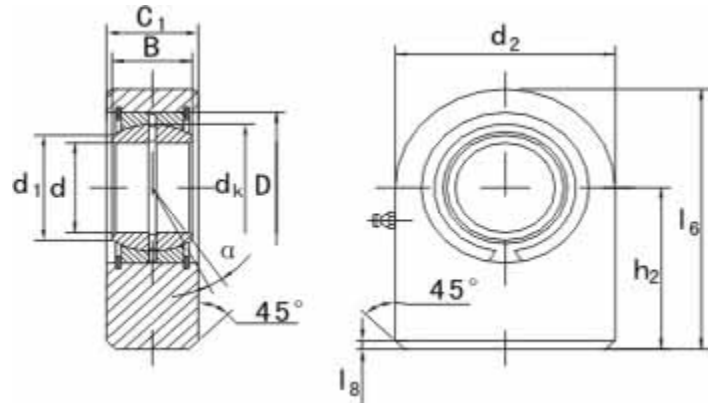
Corpo con foro di lubrificazione e ingrassatore-Rod end housing with a lubricating hole or grease nipple.

Part No.	Dimensioni – Dimensions mm														Load ratings kN		Peso Weight kg
	d	d <sub>3</sub>	d <sub>4</sub>	B	C <sub>1</sub>	d <sub>2</sub>	L <sub>7</sub>	L <sub>8</sub>	h <sub>2</sub>	L <sub>4</sub>	d <sub>k</sub>	d <sub>1</sub>	D	a	dyn	stat	
							min							≈	C	C <sub>0</sub>	
<b>GK10DO</b>	10	3	38.5	9	7	29	15	1.5	24	38.5	16	13.2	19	12	8.15	15.6	0.041
<b>GK12DO</b>	12	3	44	10	8	34	18	1.5	27	44	18	15.0	22	11	10.8	21.6	0.066
<b>GK15DO</b>	15	4	51	12	10	40	20	2.0	31	51	22	18.4	26	8	17.0	32.0	0.12
<b>GK17DO</b>	17	4	58	14	11	46	23	2.0	35	58	25	20.7	30	10	21.2	40.0	0.19
<b>GK20DO</b>	20	4	64.5	16	13	53	27.5	2.0	38	64.5	29	24.2	35	9	30.0	54.0	0.23
<b>GK25DO</b>	25	4	77	20	17	64	33	3.0	45	77	35.5	29.3	42	7	48.0	72.0	0.43
<b>GK30DO</b>	30	4	87.5	22	19	73	37.5	3.0	51	87.5	40.7	34.2	47	6	62.0	95.0	0.64
<b>GK35DO</b>	35	4	102	25	21	82	43	3.0	61	102	47	39.8	55	6	80.0	125	0.96
<b>GK40DO</b>	40	4	115	28	23	92	48	4.0	69	115	53	45.0	62	7	100	156	1.30
<b>GK45DO</b>	45	6	128	32	27	102	52	4.0	77	128	60	50.8	68	7	127	208	1.80
<b>GK50DO</b>	50	6	144	35	30	112	59	4.0	88	144	66	55.9	75	6	156	250	2.50
<b>GK60DO</b>	60	6	167.5	44	38	135	72.5	4.0	100	167.5	80	66.8	90	6	245	390	3.90
<b>GK70DO</b>	70	6	195	49	42	160	86	5.0	115	195	92	77.9	105	6	315	510	6.60
<b>GK80DO</b>	80	6	231	55	47	180	98	5.0	141	231	105	89.4	120	6	400	620	8.70

Disponibile anche la versione con Anelli di Tenuta es. GK...DO 2RS - Sealed design also available,e.g.GK... DO 2RS



## Teste a Snodo per Idrraulica Rod ends for hydraulic components GF..DO



Snodo come GE..ES o GE..ES 2RS con il corpo-It is made up of a radial spherical plain bearing GE..ES or GE..ES 2RS and rod end housing.

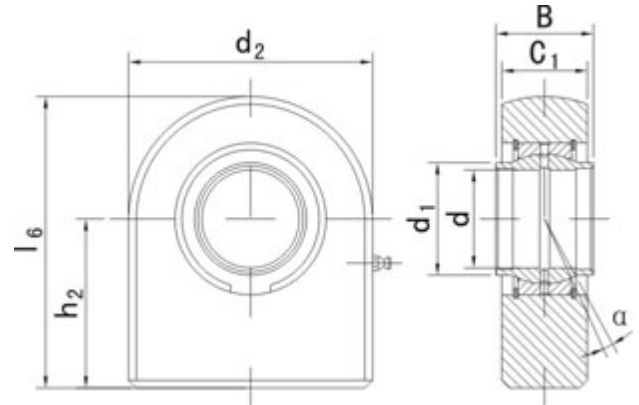
Corpo con foro di lubrificazione e ingrassatore-Rod end housing with a lubricating hole or grease nipple.

Part No.	Dimensioni – Dimensions mm										Load ratings kN		Peso Weight kg
	d	B	C <sub>1</sub>	d <sub>2</sub>	L <sub>6</sub>	L <sub>8</sub>	h <sub>2</sub>	d <sub>k</sub>	d <sub>1</sub>	D	dyn C	stat C <sub>0</sub>	
GF20DO	20	16	19	50	63	2	38	29	24.2	35	30.0	67.0	0.35
GF25DO	25	20	23	55	72.5	2	45	35.5	29.3	42	48.0	69.5	0.53
GF30DO	30	22	28	65	83.5	2	51	40.7	34.2	47	62.0	118	0.87
GF35DO	35	25	30	83	102.5	2	61	47	39.8	55	80.0	196	1.50
GF40DO	40	28	35	100	119	3	69	53	45.0	62	100	300	2.40
GF45DO	45	32	40	110	132	3	77	60	50.8	68	127	380	3.40
GF50DO	50	35	40	123	149.5	3	88	66	55.9	75	156	440	4.40
GF60DO	60	44	50	140	170	4	100	80	66.8	90	245	570	7.10
GF70DO	70	49	55	164	197	4	115	92	77.9	105	315	695	10.5
GF80DO	80	55	60	180	231	4	141	105	89.4	120	400	780	15.0
GF90DO	90	60	65	226	263	4	150	115	98.1	130	490	1340	23.5
GF100DO	100	70	70	250	295	4	170	130	109.5	150	610	1500	31.5
GF110DO	110	70	80	295	332.5	4	185	140	121.2	160	655	2160	48.5
GF120DO	120	85	90	360	390	4	210	160	135.5	180	950	3250	79.0

Disponibile anche la versione con Anelli di Tenuta es. GF...DO 2RS - Sealed design also available, e.g. GF... DO 2RS.



## Teste a Snodo per Idraulica Rod ends for hydraulic components GF..LO



Snodo come GE..ES o GE..ES 2RS con il corpo-It is made up of a radial spherical plain bearing GE..ES or GE..ES 2RS and rod end housing.

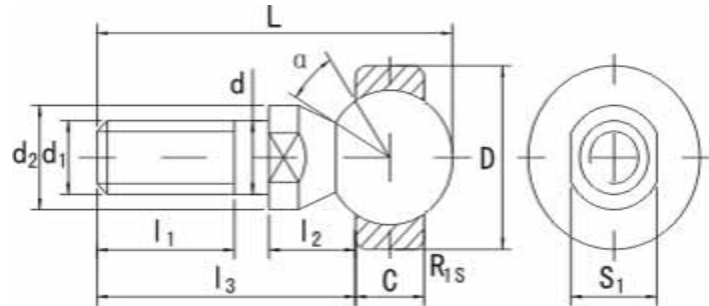
Corpo con foro di lubrificazione e ingrassatore-Rod end housing with a lubricating hole or grease nipple.

Part No.	Dimensioni – Dimensions mm								Loads ratings kN		Peso Weight kg
	d	B	C <sub>1</sub>	d <sub>2</sub>	L <sub>6</sub>	h <sub>2</sub>	d <sub>1</sub>	a	dyn	stat	
								≈	C	C <sub>0</sub>	
GF20LO	20	20	19	50	63	38	25	4	30	74	0.36
GF25LO	25	25	23	55	72.5	45	30.5	4	48	95	0.54
GF32LO	32	32	27	70	100	65	38	4	62.5	168	1.12
GF40LO	40	40	35	100	119	69	46	4	100	268	2.50
GF50LO	50	50	40	123	149.5	88	57	4	156	362	4.60
GF63LO	63	63	50	145	179.5	107	71.5	4	248	570	9.30
GF70LO	70	70	55	164	197	115	79	4	315	800	11.25
GF80LO	80	80	60	180	231	141	91	4	400	874	15.75
GF90LO	90	90	65	226	263	150	99	4	490	1045	24.00
GF100LO	100	100	70	250	295	170	113	4	610	1330	33.95
GF110LO	110	110	80	295	332.5	185	124	4	655	1490	49.00

Disponibile anche la versione con Anelli di Tenuta es. GF...LO 2RS - Sealed design also available, e.g. GF... LO 2RS.



## Articolazione Angolare Ball joints SQD



Snodo Sferico con sfera interna e anello esterno radiale, zincato

Ball joint housing is an outer ring of radial spherical plain bearing, made of zinc base alloy.

Part No.	Dimensioni – Dimensions mm											Load ratings kN	Peso Weight kg	
	d	d <sub>1</sub> 6g	d <sub>2</sub>	L <sub>1</sub> min	L <sub>2</sub>	L <sub>3</sub>	L	S <sub>1</sub>	C	D	R <sub>1s</sub> min			a ≈
<b>SQD5</b>	5	M5x0.8	9	8	8	19	27.5	7	6	16	0.3	25	2.0	0.014
<b>SQD6</b>	6	M6x1.0	10	11	8.8	23.5	33.5	8	6.75	18	0.3	25	3.2	0.021
<b>SQD8</b>	8	M8x1.25	12	12	11.6	28.6	41	10	9	22	0.3	25	5.7	0.042
<b>SQD10</b>	10	M10x1.25	14	15	14.2	34.2	49	11	10.5	26	0.3	25	9.2	0.067
<b>SQD10-1</b>	10	M10x1.5	14	21	14.2	40.2	55	11	10.5	26	0.3	25	9.2	0.067
<b>SQD12</b>	12	M12x1.25	17	17	15.1	38.1	55.1	15	12	30	0.5	25	14	0.108
<b>SQD12-1</b>	12	M12x1.75	17	24	15.1	45.1	62.1	15	12	30	0.5	25	14	0.108
<b>SQD14</b>	14	M14x1.5	19	22	16.8	51.3	70.7	17	13.5	34	0.5	20	19	0.167
<b>SQD14-1</b>	14	M14x2.0	19	28	16.8	57.3	76.7	17	13.5	34	0.5	20	19	0.167
<b>SQD16</b>	16	M16x1.5	22	23	18	54.5	76.3	19	15	38	0.5	20	26	0.238
<b>SQD16-1</b>	16	M16x2.0	22	29	18	60.5	82.3	19	15	38	0.5	20	26	0.238



**MONDIALTECH**  
Forniture Industriali

Via Raimondo Dalla Costa 2403  
41100 MODENA - ITALY  
Tel. +39 059 256090 Fax. +39 059 260883  
Codice R.E.A. 354046  
Partita IVA E. Codice Fiscale: 03061810366  
e-Mail: [mondialtech@mondialtech.net](mailto:mondialtech@mondialtech.net)  
Web: <http://www.mondialtech.net>

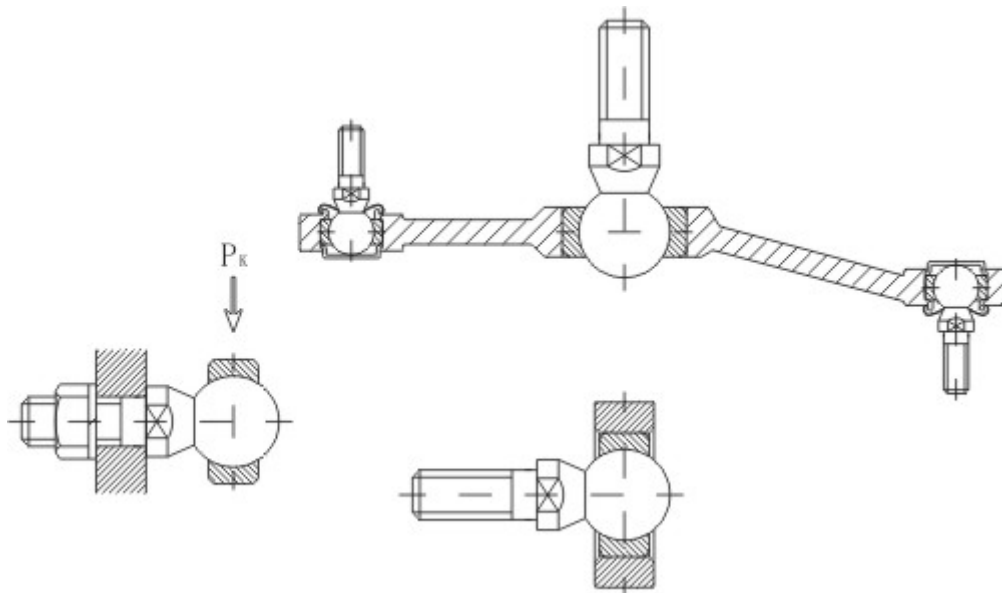
Vasto assortimento di Cuscinetti SKF - FAG

**LK**  
Supporti di Qualità

**CSC**  
Cuscinetti Specializzati

**MONDIAL**  
Cuscinetti a Rulli

## Esempio di applicazione – Example of application





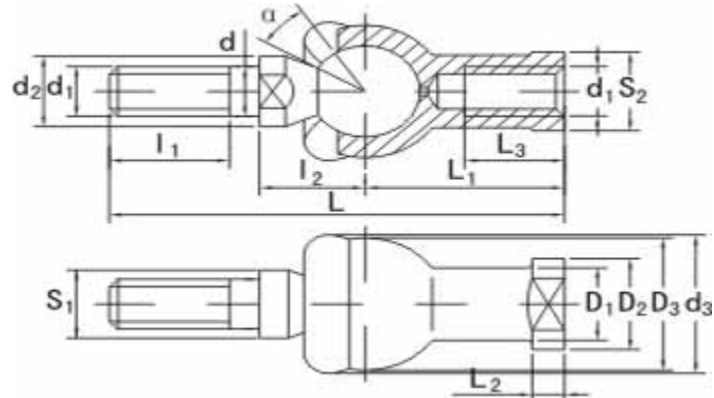
**MONDIALTECH**  
Forniture Industriali  
Via Raimondo Dalla Costa 240/b  
41100 MODENA - ITALY  
Tel. +39 059 250090 Fax. +39 059 260083  
Codice R.E.A. 354046  
Partita IVA E Codice Fiscale: 03061310366  
e-Mail: [mondialtech@mondialtech.net](mailto:mondialtech@mondialtech.net)  
Web: <http://www.mondialtech.net>



Vasto assortimento di Cuscinetti SKF - FAG

## Articolazioni Angolari

### Ball joints SQZ..RS



Articolazione Angolare con filetto destro o sinistro-Ball joint housing with right or left-hand thread.

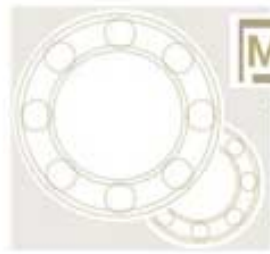
Articolazione Angolare zincata-Ball joint housing made of zinc base alloy.

Con parapolvere in gomma-With rubber dust seal.

Part No.	Dimensioni – Dimensions mm															Load ratingskN	Peso Weight kg	
	d	d <sub>1</sub>	d <sub>2</sub>	d <sub>3</sub>	l <sub>1</sub>	l <sub>2</sub>	S <sub>1</sub>	L	L <sub>1</sub>	L <sub>2</sub>	L <sub>3</sub>	D <sub>1</sub>	D <sub>2</sub>	D <sub>3</sub>	S <sub>2</sub>			a
SQZ5RS	5	M5x0.8	9	20	8	11	7	46	24	4	12	9	11	17	9	15	2.8	0.025
SQZ6RS	6	M6x1.0	10	20	11	12.2	8	55.2	28	5	15	10	13	20	11	15	3.7	0.041
SQZ8RS	8	M8x1.25	12	24	12	16	10	65	32	5	16	12.5	16	24	14	15	5.8	0.075
SQZ10RS	10	M10x1.25	14	30	15	19.5	11	74.5	35	6.5	18	15	19	28	17	15	8.4	0.12
SQZ10RS-1	10	M10x1.5	14	30	21	19.5	11	80.5	35	6.5	18	15	19	28	17	15	8.4	0.12
SQZ12RS	12	M12x1.25	17	32	17	21	15	84	40	6.5	20	17.5	22	32	19	15	11	0.18
SQZ12RS-1	12	M12x1.75	17	32	24	21	15	91	40	6.5	20	17.5	22	32	19	15	11	0.18
SQZ14RS	14	M14x1.5	19	38	22	23.5	17	103	45	8	25	20	25	36	22	11	15	0.27
SQZ14RS-1	14	M14x2.0	19	38	28	23.5	17	109	45	8	25	20	25	36	22	11	15	0.27
SQZ16RS	16	M16x1.5	22	44	23	25.5	19	112	50	8	27	22	27	40	22	11	15	0.36
SQZ16RS-1	16	M16x2.0	22	44	29	25.5	19	118	50	8	27	22	27	40	22	11	15	0.36
SQZ18RS	18	M18x1.5	23	45	25	31	20	130.5	58	10	32	25	31	45	27	11	19	0.54
SQZ20RS	20	M20x1.5	27	50	25	29	24	133	63	10	38	27.5	34	45	30	7.5	19	0.57
SQZ22RS	22	M22x1.5	27	52	26	33	24	145	70	12	43	30	37	50	32	7.5	23	0.76

Per versione con filettatura sinistra agg.suffisso "L" es. SQZL...RS - For left-hand thread of the ball joint housing, please add suffix "L" is added to bearing number, e.g. SQZL..RS.

Per versione senza parapolvere in gomma la sigla è SQZ...-The type number of ball joints without seal is SQZ....



**MONDIALTECH**

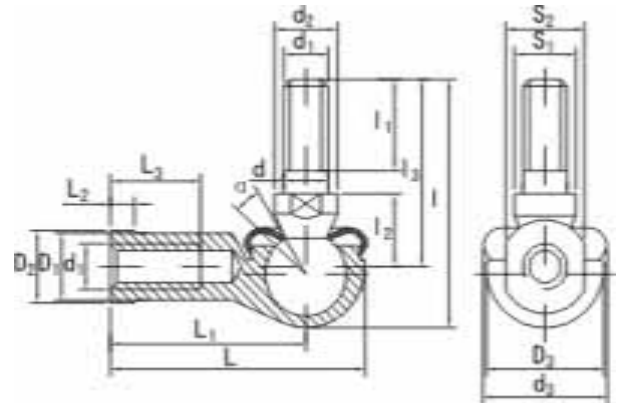
Forniture Industriali

Via Raimondo Dalla Costa 240/b  
41100 MODENA - ITALY  
Tel. +39 059 250090 Fax. +39 059 260083  
Codice R.E.A. 354046  
Partita IVA E. Codice Fiscale: 03061810366  
e-Mail: monditecinfo@mondialtech.net  
Web: http://www.mondialtech.net

Vasto assortimento di Cuscinetti SKF - FAG



# Articolazione Angolare Ball joints SQ..RS



- Articolazione Angolare con filetto destro o sinistro-Ball joint housing with right or left-hand thread.

Articolazione Angolare zincata-Ball joint housing made of zinc base alloy.

Con parapolvere in gomma-With rubber dust seal.

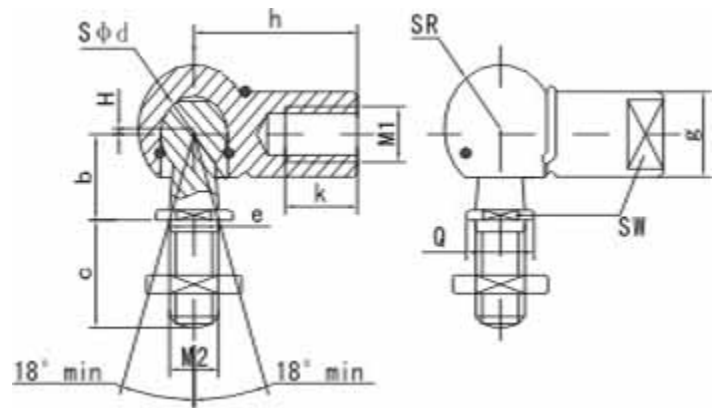
Part No.	Dimensioni – Dimensions mm																	Load Ratings KN	Peso Weight kg	
	d	d <sub>1</sub>	d <sub>2</sub>	d <sub>3</sub>	l	l <sub>1</sub>	l <sub>2</sub>	l <sub>3</sub>	S <sub>1</sub>	L	L <sub>1</sub>	L <sub>2</sub>	L <sub>3</sub>	D <sub>1</sub>	D <sub>2</sub>	D <sub>3</sub>	S <sub>2</sub>			a
	min								min								°Ö			
SQ5RS	5	M5x0.8	9	19	29	8	10	21	7	35	27	4	14	9	11	16	9	25	2.2	0.026
SQ6RS	6	M6x1.0	10	20	35.5	11	11	26	8	40	30	5	14	10	13	19	11	25	3.5	0.039
SQ8RS	8	M8x1.25	12	24	42.5	12	14	31	10	48	36	5	17	12.5	16	23	14	25	6.6	0.068
SQ10RS	10	M10x1.25	14	30	50.5	15	17	37	11	57	43	6.5	21	15	19	27	17	25	10	0.112
SQ10RS-1	10	M10x1.5	14	30	56.5	21	17	43	11	57	43	6.5	21	15	19	27	17	25	10	0.112
SQ12RS	12	M12x1.25	17	32	57.5	17	19	42	15	66	50	6.5	25	17.5	22	31	19	25	16	0.164
SQ12RS-1	12	M12x1.75	17	32	64.5	24	19	49	15	66	50	6.5	25	17.5	22	31	19	25	16	0.164
SQ14RS	14	M14x1.5	19	38	73.5	22	21.5	56	17	75	57	8	26	20	25	35	22	25	19	0.254
SQ14RS-1	14	M14x2.0	19	38	79.5	28	21.5	62	17	75	57	8	26	20	25	35	22	25	19	0.254
SQ16RS	16	M16x1.5	22	44	79.5	23	23.5	60	19	84	64	8	32	22	27	39	22	20	26	0.336
SQ16RS-1	16	M16x2.0	22	44	85.5	29	23.5	66	19	84	64	8	32	22	27	39	22	20	26	0.336
SQ18RS	18	M18x1.5	23	45	90	25	26.5	68	20	93	71	10	34	25	31	44	27	20	33	0.464
SQ20RS	20	M20x1.5	27	50	90	25	27	68	24	99	77	10	35	27.5	34	44	30	20	45	0.538
SQ22RS	22	M22x1.5	27	52	95	26	28	70	24	109	84	12	41	30	37	50	32	16	48	0.713

Per versione con filettatura sinistra agg.suffisso "L" es. SQL...RS - For left-hand thread of the ball joint housing, please add suffix "L" is added to bearing number, e.g. SQL..RS.

Per versione senza parapolvere in gomma la sigla è SQ...-The type number of ball joints without seal is SQ....



## Articolazioni Angolari Ball joint SQP..S



Articolazione Angolare in Acciaio al Carbonio Temprata con filetto destro o sinistro-Ball joint housing in carbon steel Tempered, with right or left-hand thread.

Superficie zincata-Surface zinc pated.

Snodo ingrassato prima dell'assemblaggio-Greased filled in the ball joint socket.

Part No.	Dimensioni – Dimensions mm												Load ratings kN	Peso Weight kg	
	Q	M <sub>1</sub> 6H	M <sub>2</sub> 6g	b	c	d	e	g	h	H	k	SW min			SR
SQP5S	8	M5x0.8	M5x0.8	9	10	8	5	8	22	0.70	10.2	7	6.4	15.2	0.014
SQP6S	10	M6x1.0	M6x1.0	11	12.5	10	6	10	25	0.70	11.5	8	7.4	25.2	0.024
SQP8S	13	M8x1.25	M8x1.25	13	16.5	13	8	13	30	1.16	14.0	11	9.65	53.1	0.053
SQP10S	16	M10x1.5	M10x1.5	16	20	16	10	16	35	1.16	15.5	13	12	103.8	0.097
SQP12S	16	M12x1.75	M12x1.75	16	20	16	12	16	35	1.16	15.5	13	12	103.8	0.097
SQP14S	22	M14x2.0	M14x2.0	20	27	19	14	22	45	1.50	21.5	17	15	220.9	0.218
SQP14-1S	22	M14x1.5	M14x1.5	20	27	19	14	22	45	1.50	21.5	17	15	220.9	0.218

Per versione con filettatura sinistra agg.suffisso "L" es. SQPL...S - For left-hand thread of the ball joint housing, please add suffix "L" is added to bearing number, e.g. SQPL...S.





## Tolleranze - Tolerances

- Anello Interno degli Snodi Sferici - Inner ring of spherical plain bearing
- Anello Esterno degli Snodi Sferici - Outer ring of spherical plain bearing
- Anello Interno delle Teste a Snodo - Inner ring of rod ends
- Centro dell'Inclinazione delle Teste a Snodo - Centre height deviation of rod ends

### 1. Anello Interno degli Snodi Sferici - Inner ring of spherical plain bearing

d mm	over~incl	- 6	6 10	10 18	18 30	30 50	50 80	80 120
GE..E		0 -0.008	0 -0.008	0 -0.008				
GE..ES				0 -0.008	0 -0.010	0 -0.012	0 -0.015	0 -0.020
GE..ES 2RS				0 -0.008	0 -0.010	0 -0.012	0 -0.015	0 -0.020
GEG..E		0 -0.008	0 -0.008					
GEG..ES				0 -0.008	0 -0.010	0 -0.012	0 -0.015	0 -0.020
GEG..ES 2RS				0 -0.008	0 -0.010	0 -0.012	0 -0.015	0 -0.020
GE..LO				+0.018 0	+0.021 0	+0.025 0	+0.030 0	+0.035 0
GE..HO 2RS					0 -0.010	0 -0.012	0 -0.015	
GEZ..ES				0	0	0	0	0
GEGZ..ES				-0.008	-0.010	-0.012	-0.015	-0.020
GEZ..ES 2RS				0	0	0	0	0
GEGZ..ES 2RS				-0.008	-0.010	-0.012	-0.015	-0.020
GE..UK		0 -0.008	0 -0.008	0 -0.008	0 -0.010	0 -0.012		
GE..UK 2RS				0 -0.008	0 -0.010	0 -0.012	0 -0.015	0 -0.020
GE..FW		0 -0.008	0 -0.008	0 -0.008	0 -0.010	0 -0.012		
GE..FW 2RS				0 -0.008	0 -0.010	0 -0.012	0 -0.015	0 -0.020
GEBK..S		+0.012 0	+0.015 0	+0.018 0	+0.021 0			
GEBJ..S		+0.012 0	+0.015 0	+0.018 0	+0.021 0			
G..PB		+0.012 0	+0.015 0	+0.018 0	+0.021 0			
S..PB		+0.012 0	+0.015 0	+0.018 0	+0.021 0			
G..PW		+0.012 0	+0.015 0	+0.018 0	+0.021 0			
S..PW		+0.012 0	+0.015 0	+0.018 0	+0.021 0			



**MONDIALTECH**

Forniture Industriali

Via Raimondo Dalla Costa 240/b  
41100 MODENA - ITALY  
Tel. +39 059 256090 Fax: +39 059 260883  
Codice R.E.A. 354046  
Partita IVA E. Codice Fiscale: 03661810366  
e-Mail: [monditecinfo@mondialtech.net](mailto:monditecinfo@mondialtech.net)  
Web: <http://www.mondialtech.net>

Vasto assortimento di Cuscinetti SKF - FAG



Inner ring width tolerance:0~-0.12mm

**2.Anello Esterno degli Snodi Sferici - Outer ring of spherical plain bearing**

d mm	over ~ incl	10 18	18 30	30 50	50 60	60 80	80 120	120 150	150 180
GE..E		0 -0.008	0 -0.009						
GE..ES			0 -0.009	0 -0.011	0 -0.013	0 -0.013	0 -0.015	0 -0.018	0 -0.025
GE..ES..2RS				0 -0.011	0 -0.013	0 -0.013	0 -0.015	0 -0.018	0 -0.025
GEG..E		0 -0.008	0 -0.009	0 -0.011					
GEG..ES				0 -0.011	0 -0.013	0 -0.013	0 -0.015	0 -0.018	0 -0.025
GEG..ES 2RS				0 -0.011	0 -0.013	0 -0.013	0 -0.015	0 -0.018	0 -0.025
GE..LO				0 -0.011	0 -0.013	0 -0.013	0 -0.015	0 -0.018	
GE..HO 2RS				0 -0.011	0 -0.013	0 -0.013	0 -0.015	0 -0.018	
GEZ..ES			0	0	0	0	0	0	
GEGZ..ES			-0.009	-0.011	-0.013	-0.013	-0.015	-0.018	
GEZ..ES 2RS				0	0	0	0	0	
GEGZ..ES 2RS				-0.011	-0.013	-0.013	-0.015	-0.018	
GE..UK		0 -0.008	0 -0.009	0 -0.011					
GE..UK 2RS			0 -0.009	0 -0.011	0 -0.013	0 -0.013	0 -0.015	0 -0.018	0 -0.025
GE..FW		0 -0.008	0 -0.009	0 -0.011	0 0.013				
GE..FW 2RS			0 -0.009	0 -0.011	0 -0.013	0 -0.013	0 -0.015	0 -0.018	0 -0.025
GEBK..S		0 -0.011	0 -0.013	0 -0.016	0 -0.019				
GEBJ..S		0 -0.011	0 -0.013	0 -0.016	0 -0.019				
G..PB		0 -0.011	0 -0.013	0 -0.016	0 -0.019				
S..PB		0 -0.011	0 -0.013	0 -0.016	0 -0.019				
G..PW		0 -0.011	0 -0.013	0 -0.016	0 -0.019				
S..PW		0 -0.011	0 -0.013	0 -0.016	0 -0.019				

Inner ring width tolerance:0~-0.24mm



### 3. Anello Interno delle Teste a Snodo - Inner ring of rod ends

d mm	over ~incl	- 6	6 10	10 18	18 30	30 50	50 80	80 120
SI..E SI..ES 2RS SA..E SA..ES 2RS	SI..ES SA..ES							
GIR..UK GIR..UK 2RS GAR..UK 2RS GK..DO GIHR..DO GIHR-K..DO	GAR..UK GF..DO	0 -0.008	0 -0.008	0 -0.008	0 -0.010	0 -0.012	0 -0.015	0 -0.020
GIHN-K..LO GF..LO				+0.018 0	+0.021 0	+0.025 0	+0.030 0	+0.035 0
SI..T/K SI..BK SI..PK SSI..T/K RF...	SA..T/K SA..BK SA..PK SSA..T/K RM..		+0.012 0	+0.015 0	+0.018 0	+0.021 0		

### 4. Centro dell'Inclinazione dal centro delle Teste a Snodo - Centre height deviation of rod ends

d mm	over ~incl	- 6	6 20	20 30	30 45	45 60	60 80
Δhs		+0.80 +1.20	+0.80 -1.20	+1.00 -1.70	+1.40 -2.10	+1.80 -2.70	+2.25 -3.40

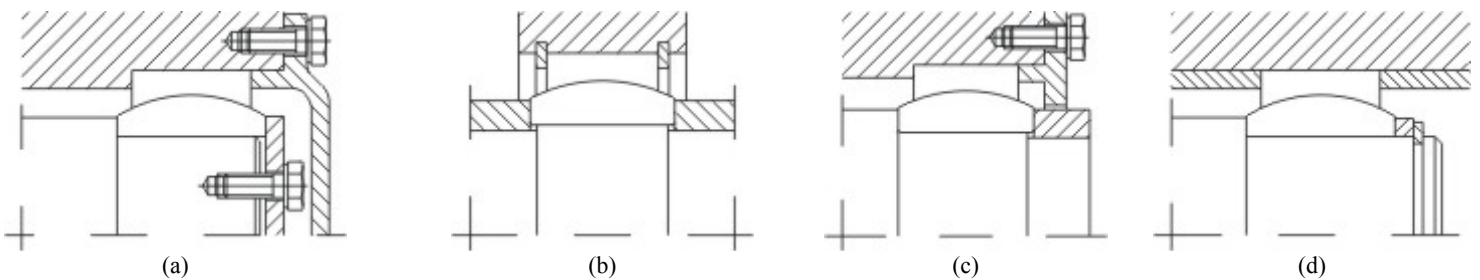


# Assemblaggio e Lubrificazione degli Snodi sferici

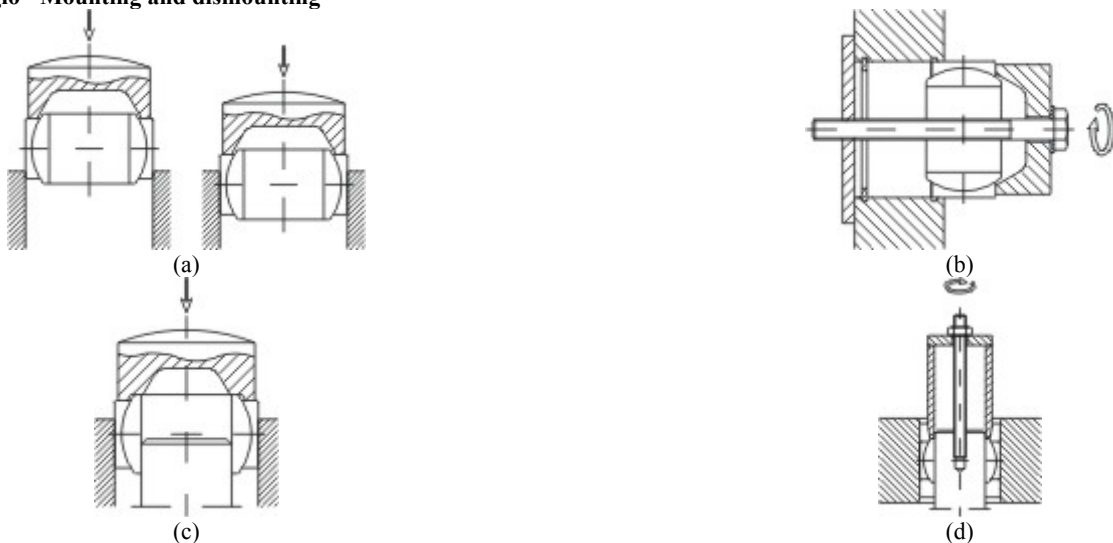
## Assembly and lubrication for spherical plain bearings.

- Alcuni esempi di assemblaggio - Simple example of assembly
- Montaggio e Smontaggio - Mounting and dismounting
- Lubrificazione e Manutenzione - Lubrication and maintenance
- Alcuni esempi di anelli di tenuta - Simple example of sealing

### .Alcuni esempi di assemblaggio - Simple example of assembly



### .Montaggio e Smontaggio - Mounting and dismounting





**MONDIALTECH**  
Forniture Industriali

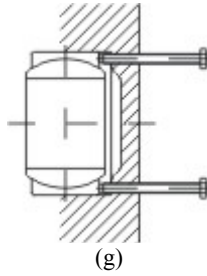
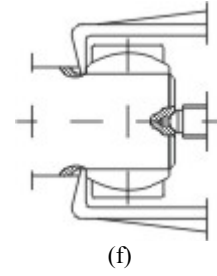
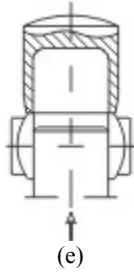
Via Raimondo Dalla Costa 240/b  
41100 MODENA - ITALY  
Tel. +39 059 256090 Fax. +39 059 260883  
Codice R.E.A. 354046  
Partita IVA E Codice Fiscale: 03661810366  
e-Mail: [mondialtech@mondialtech.net](mailto:mondialtech@mondialtech.net)  
Web: <http://www.mondialtech.net>

Vasto assortimento di Cuscinetti SKF - FAG

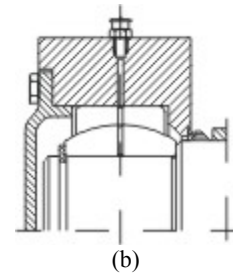
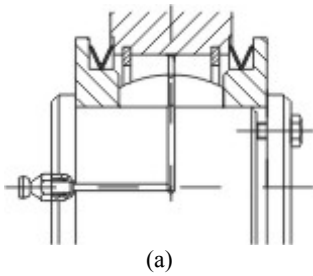
**LK**  
Supporti di Qualità

**CSC**  
Cuscinetti Specializzati

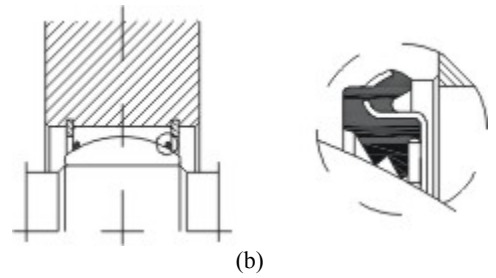
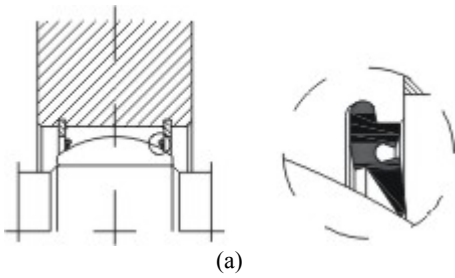
**MONDIAL**  
Cuscinetti a Balli



**.Lubrificazione e Manutenzione - Lubrication and maintenance**



**.Alcuni esempi di anelli di Tenuta - Simple example of sealing**





# MONDIALTECH

Forniture Industriali

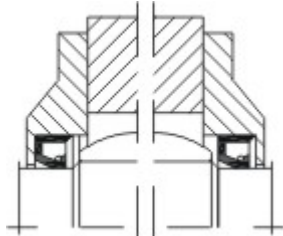
Via Raimondo Dalla Costa 240/b  
41100 MODENA - ITALY  
Tel. +39 059 256090 Fax. +39 059 260883  
Codice R.E.A. 354046  
Partita IVA E. Codice Fiscale: 03661810366  
e-Mail: [monditecinfo@mondialtech.net](mailto:monditecinfo@mondialtech.net)  
Web: <http://www.mondialtech.net>

LK  
Pagamenti di Qualità

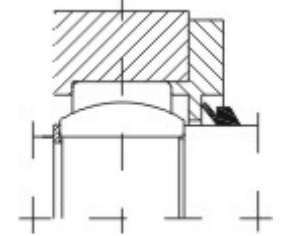
CSC  
Credibilità e Serietà

MONDIAL  
Cassa e Balli

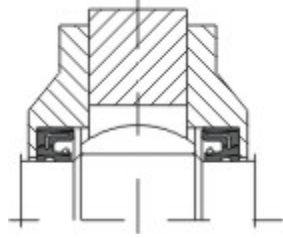
Vasto assortimento di Cuscinetti SKF - FAG



(c)



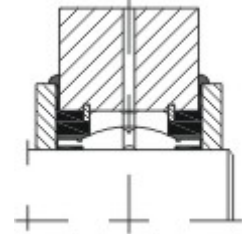
(e)



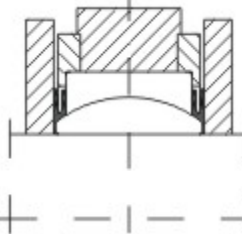
(g)



(d)



(f)



(h)